



[Go to Product page](#)

Datasheet for ABIN7011366
anti-TOMM20 antibody

4 Images

Overview

Quantity:	60 µL
Target:	TOMM20
Reactivity:	Human, Mouse, Rat
Host:	Rabbit
Clonality:	Polyclonal
Application:	Western Blotting (WB), Immunohistochemistry (IHC), Immunofluorescence (IF)

Product Details

Immunogen:	Recombinant protein of human TOMM20
Isotype:	IgG
Characteristics:	Polyclonal Antibody
Purification:	Affinity purification

Target Details

Target:	TOMM20
Alternative Name:	TOMM20 (TOMM20 Products)
Molecular Weight:	Observed_MW: 16 kDa Calculated_MW: 16 kDa
Gene ID:	9804
UniProt:	Q15388

Target Details

Pathways: [Unfolded Protein Response](#)

Application Details

Application Notes: WB 1:500 - 1:2000 IHC 1:50 - 1:200 IF 1:20 - 1:50

Restrictions: For Research Use only

Handling

Format: Liquid

Concentration: 1 mg/mL

Buffer: PBS with 0.02 % sodium azide, 50 % glycerol, pH 7.3

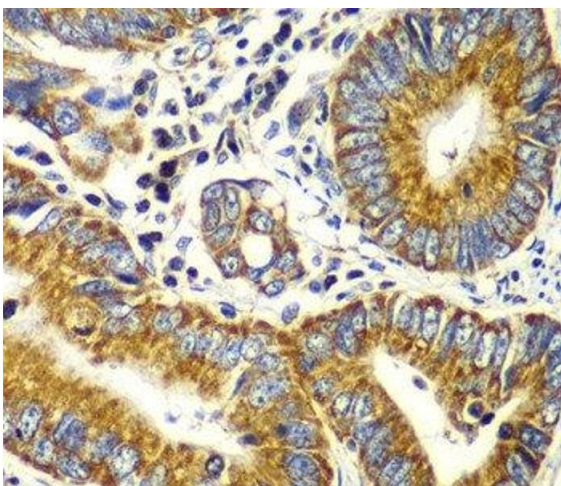
Preservative: Sodium azide

Precaution of Use: This product contains Sodium azide: a POISONOUS AND HAZARDOUS SUBSTANCE which should be handled by trained staff only.

Storage: -20 °C

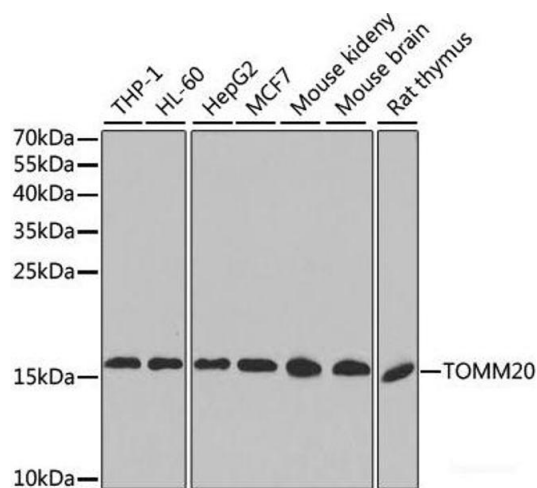
Storage Comment: Store at -20°C. Avoid freeze / thaw cycles.

Images



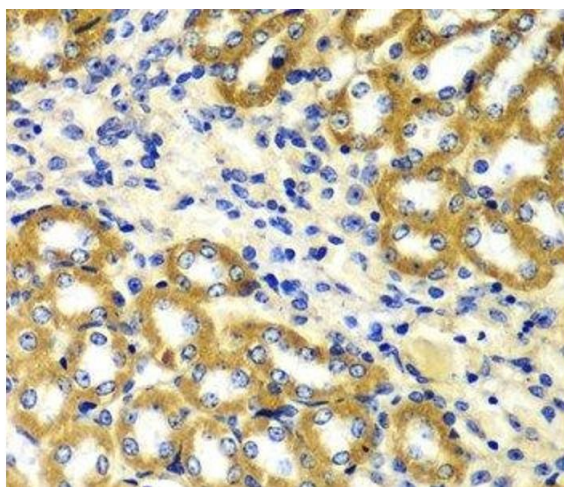
Immunohistochemistry (Paraffin-embedded Sections)

Image 1. Immunohistochemistry of paraffin-embedded human colon carcinoma using TOMM20 antibody.



Western Blotting

Image 2. Western blot analysis of extracts of various cell lines, using TOMM20 antibody.



Immunohistochemistry (Paraffin-embedded Sections)

Image 3. Immunohistochemistry of paraffin-embedded mouse kidney using TOMM20 antibody.

Please check the [product details page](#) for more images. Overall 4 images are available for ABIN7011366.