

Datasheet for ABIN7011514

anti-Neuropeptide FF antibody



[Go to Product page](#)

1 Image

Overview

Quantity:	60 µL
Target:	Neuropeptide FF (NPFF)
Reactivity:	Human, Rat
Host:	Rabbit
Clonality:	Polyclonal
Application:	Western Blotting (WB)

Product Details

Immunogen:	Recombinant fusion protein of human NPFF (NP_003708.1).
Isotype:	IgG
Characteristics:	Polyclonal Antibody
Purification:	Affinity purification

Target Details

Target:	Neuropeptide FF (NPFF)
Alternative Name:	NPFF (NPFF Products)
Background:	This gene encodes a member of the FMRFamide related peptide (FARP) family of neuropeptides. The encoded preproprotein is proteolytically processed to generate multiple amidated peptides. These peptides may play a role in the regulation of heart rate and blood pressure and the modulation of morphine-induced antinociception. Patients with hypertension exhibit decreased expression of the encoded protein. Alternative splicing results in multiple

Target Details

transcript variants, at least one of which encodes an isoform that is proteolytically processed.

Molecular Weight: Observed_MW: 12 kDa
Calculated_MW: 12 kDa

Gene ID: 8620

UniProt: [O15130](#)

Application Details

Application Notes: WB 1:500-1:2000

Restrictions: For Research Use only

Handling

Format: Liquid

Concentration: 1 mg/mL

Buffer: PBS with 0.02 % sodium azide, 50 % glycerol, pH 7.3

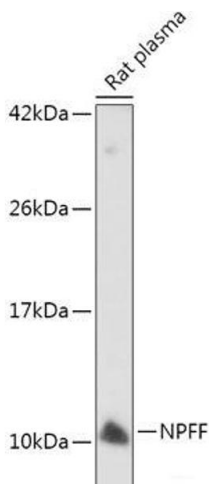
Preservative: Sodium azide

Precaution of Use: This product contains Sodium azide: a POISONOUS AND HAZARDOUS SUBSTANCE which should be handled by trained staff only.

Storage: -20 °C

Storage Comment: Store at -20°C. Avoid freeze / thaw cycles.

Images



Western Blotting

Image 1. Western blot analysis of extracts of Rat plasma using NPFF Polyclonal Antibody at dilution of 1:500.