



[Go to Product page](#)

Datasheet for ABIN7011690
anti-L3MBTL3 antibody

1 Image

Overview

| | |
|--------------|-------------------------|
| Quantity: | 60 µL |
| Target: | L3MBTL3 |
| Reactivity: | Human, Mouse |
| Host: | Rabbit |
| Clonality: | Polyclonal |
| Application: | Immunofluorescence (IF) |

Product Details

| | |
|------------------|---|
| Immunogen: | Recombinant fusion protein of human L3MBTL3 (NP_001007103.1). |
| Isotype: | IgG |
| Characteristics: | Polyclonal Antibody |
| Purification: | Affinity purification |

Target Details

| | |
|-------------------|--|
| Target: | L3MBTL3 |
| Alternative Name: | L3MBTL3 (L3MBTL3 Products) |
| Background: | This gene encodes a member of the malignant brain tumor (MBT) family of chromatin interacting transcriptional repressors. Members of this family function as methyl-lysine readers, which recognize methylated lysine residues on histone protein tails, and are associated with the repression of gene expression. The encoded protein may regulate hematopoiesis. Homozygous deletion of this gene has been observed in human patients with medulloblastoma. |

Target Details

Gene ID: 84456

UniProt: [Q96JM7](#)

Application Details

Application Notes: IF 1:50-1:100

Restrictions: For Research Use only

Handling

Format: Liquid

Concentration: 1 mg/mL

Buffer: PBS with 0.02 % sodium azide, 50 % glycerol, pH 7.3

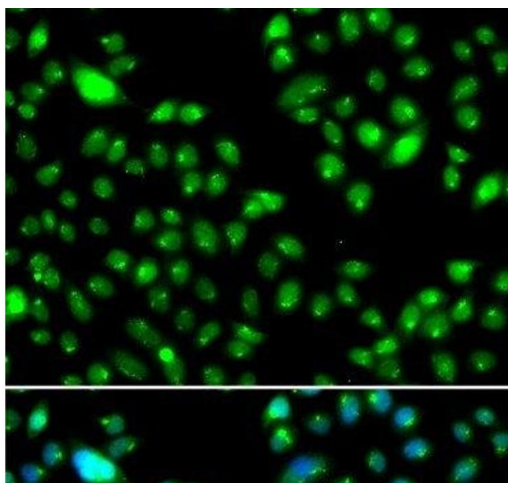
Preservative: Sodium azide

Precaution of Use: This product contains Sodium azide: a POISONOUS AND HAZARDOUS SUBSTANCE which should be handled by trained staff only.

Storage: -20 °C

Storage Comment: Store at -20°C. Avoid freeze / thaw cycles.

Images



Immunofluorescence

Image 1. Immunofluorescence analysis of MCF-7 cells using L3MBTL3 Polyclonal Antibody