



[Go to Product page](#)

Datasheet for ABIN701170

anti-Ulex Europaeus Lectin 1 antibody (AA 151-243)

1 Image

Overview

Quantity:	100 µL
Target:	Ulex Europaeus Lectin 1
Binding Specificity:	AA 151-243
Reactivity:	Plant, Ulex europaeus (Furze)
Host:	Rabbit
Clonality:	Polyclonal
Conjugate:	This Ulex Europaeus Lectin 1 antibody is un-conjugated
Application:	Immunofluorescence (Cultured Cells) (IF (cc)), Immunofluorescence (Paraffin-embedded Sections) (IF (p)), ELISA, Immunohistochemistry (Frozen Sections) (IHC (fro)), Immunohistochemistry (Paraffin-embedded Sections) (IHC (p))

Product Details

Immunogen:	KLH conjugated synthetic peptide derived from Ulex europaeus (Furze) Anti-H(O) lectin 1
Isotype:	IgG
Cross-Reactivity:	Plant
Cross-Reactivity (Details):	Ulex Europaeus
Purification:	Purified by Protein A.

Target Details

Target:	Ulex Europaeus Lectin 1
---------	-------------------------

Target Details

Abstract: [Ulex Europaeus Lectin 1 Products](#)

Background: Synonyms: UEA 1, UEA I, UEA-I, UEAI, UEA1, UEA-1, UEA1, Ulex europaeus agglutinin, Anti HO lectin 1, Anti HO lectin I, Anti-H(O) lectin 1.

Background: Ulex Europaeus is a European gorse shrub with fragrant golden-yellow flowers. Ulex Europaeus-I Lectin is a 46 kDa glycoprotein known to interact with -L fucosyl residues in oligosaccharides present on the membranes of human blood group O erythrocytes, human endothelial cells and a variety of human and animal epithelial cells. This antibody reacts with Ulex Europaeus Lectin 1 bound to human endothelial cells of normal and neoplastic blood and lymphatic vesicles. It also reacts with human epithelia such as in the colon, bronchus, epidermis, sweat gland ducts and hair follicles. It also reacts with for Ulex Europaeus Lectin 1 bound to vascular endothelium and squamous epithelium of human tonsil. While erythrocytes may be stained, no other tonsillar elements are reactive with the antibody. This antibody may be useful in the detection of vascular tumors, the investigation of vascular invasion by tumor cells, for determination of Ulex Europaeus Lectin 1 binding to normal, embryonal, dysplastic and neoplastic epithelial and the study of storage diseases such as fucosidosis.

UniProt: [P22972](#)

Application Details

Application Notes: ELISA 1:500-1000
IHC-P 1:200-400
IHC-F 1:100-500
IF(IHC-P) 1:50-200
IF(IHC-F) 1:50-200
IF(ICC) 1:50-200

Restrictions: For Research Use only

Handling

Format: Liquid

Concentration: 1 µg/µL

Buffer: 0.01M TBS(pH 7.4) with 1 % BSA, 0.02 % Proclin300 and 50 % Glycerol.

Preservative: ProClin

Precaution of Use: This product contains ProClin: a POISONOUS AND HAZARDOUS SUBSTANCE, which should be

Handling

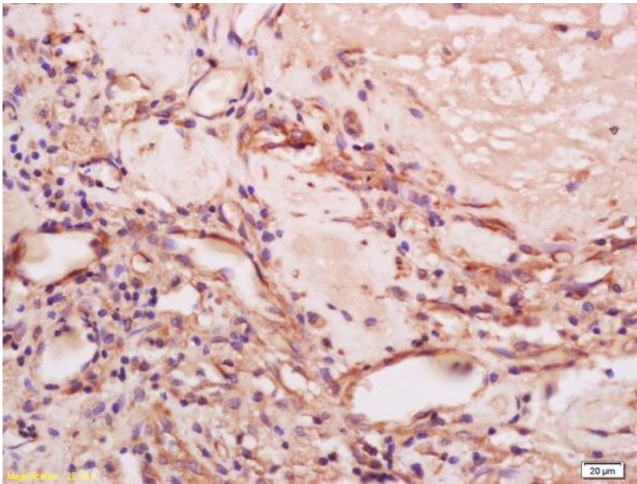
handled by trained staff only.

Storage: 4 °C,-20 °C

Storage Comment: Shipped at 4°C. Store at -20°C for one year. Avoid repeated freeze/thaw cycles.

Expiry Date: 12 months

Images



Immunohistochemistry

Image 1. Formalin-fixed and paraffin embedded human glioma tissue labeled with Anti-Ulex Europaeus Lectin 1/UEA1 Polyclonal Antibody, Unconjugated (ABIN701170) at 1:200, followed by conjugation to the secondary antibody and DAB staining