

Datasheet for ABIN7011704

anti-SMYD1 antibody[Go to Product page](#)**1** Image

Overview

Quantity:	60 µL
Target:	SMYD1
Reactivity:	Human, Mouse, Rat
Host:	Rabbit
Clonality:	Polyclonal
Conjugate:	This SMYD1 antibody is un-conjugated
Application:	Western Blotting (WB)

Product Details

Immunogen:	Recombinant fusion protein of human SMYD1 (NP_938015.1).
Isotype:	IgG
Characteristics:	Polyclonal Antibody
Purification:	Affinity purification

Target Details

Target:	SMYD1
Alternative Name:	SMYD1 (SMYD1 Products)
Background:	SMYD1 (SET And MYND Domain Containing 1) is a Protein Coding gene. Diseases associated with SMYD1 include Epiphyseal Dysplasia, Multiple, 1. Among its related pathways are Lysine degradation and Heart Development. Gene Ontology (GO) annotations related to this gene include transcription corepressor activity and histone-lysine N-methyltransferase activity. An

Target Details

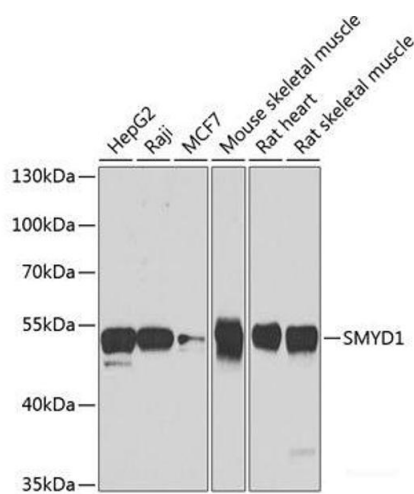
	important paralog of this gene is SMYD2.
Molecular Weight:	Observed_MW: 54 kDa Calculated_MW: 56 kDa
Gene ID:	150572
UniProt:	Q8NB12
Pathways:	Regulation of Muscle Cell Differentiation, Skeletal Muscle Fiber Development

Application Details

Application Notes:	WB 1:500-1:2000
Restrictions:	For Research Use only

Handling

Format:	Liquid
Concentration:	1 mg/mL
Buffer:	PBS with 0.02 % sodium azide, 50 % glycerol, pH 7.3
Preservative:	Sodium azide
Precaution of Use:	This product contains Sodium azide: a POISONOUS AND HAZARDOUS SUBSTANCE which should be handled by trained staff only.
Storage:	-20 °C
Storage Comment:	Store at -20°C. Avoid freeze / thaw cycles.



Western Blotting

Image 1. Western blot analysis of extracts of various cell lines using SMYD1 Polyclonal Antibody at dilution of 1:1000.