

Datasheet for ABIN7011849

anti-WIP12 antibody

3 Images

[Go to Product page](#)

Overview

Quantity:	60 µL
Target:	WIP12
Reactivity:	Human, Mouse
Host:	Rabbit
Clonality:	Polyclonal
Conjugate:	This WIP12 antibody is un-conjugated
Application:	Western Blotting (WB), Immunohistochemistry (IHC)

Product Details

Immunogen:	Recombinant fusion protein of human WIP12 (NP_057087.2).
Isotype:	IgG
Characteristics:	Polyclonal Antibody
Purification:	Affinity purification

Target Details

Target:	WIP12
Alternative Name:	WIP12 (WIP12 Products)
Background:	WD40 repeat proteins are key components of many essential biologic functions. They regulate the assembly of multiprotein complexes by presenting a beta-propeller platform for simultaneous and reversible protein-protein interactions. Members of the WIP1 subfamily of WD40 repeat proteins, such as WIP12, have a 7-bladed propeller structure and contain a

Target Details

conserved motif for interaction with phospholipids.

Molecular Weight: Observed_MW: 48 kDa
Calculated_MW: 42 kDa/46 kDa/47 kDa/48 kDa/49 kDa

Gene ID: 26100

UniProt: [Q9Y4P8](#)

Application Details

Application Notes: WB 1:500-1:2000 IHC 1:50-1:200

Restrictions: For Research Use only

Handling

Format: Liquid

Concentration: 1 mg/mL

Buffer: PBS with 0.02 % sodium azide, 50 % glycerol, pH 7.3

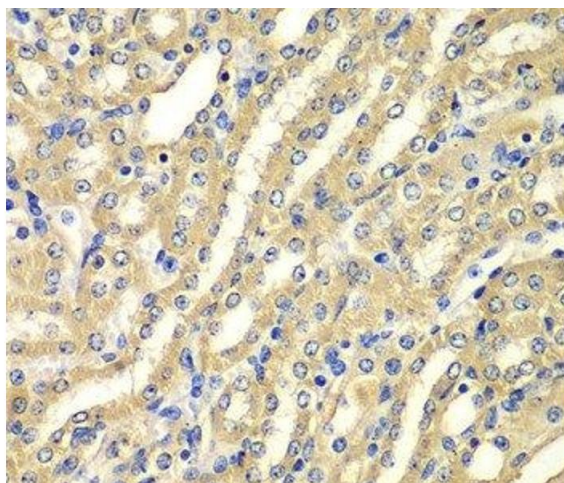
Preservative: Sodium azide

Precaution of Use: This product contains Sodium azide: a POISONOUS AND HAZARDOUS SUBSTANCE which should be handled by trained staff only.

Storage: -20 °C

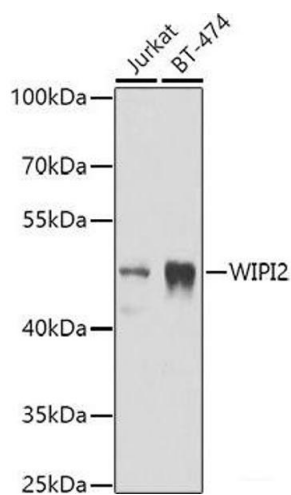
Storage Comment: Store at -20°C. Avoid freeze / thaw cycles.

Images



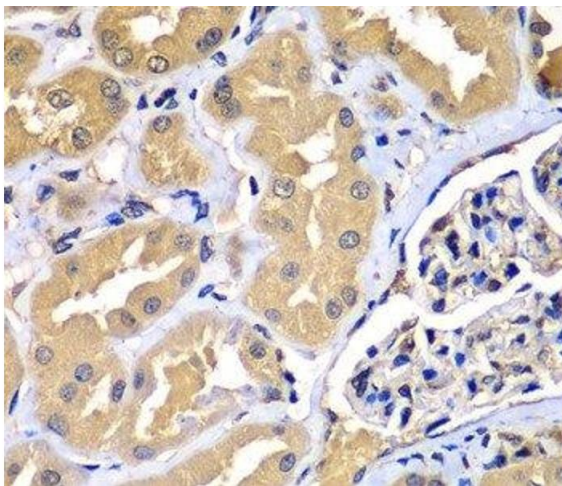
Immunohistochemistry (Paraffin-embedded Sections)

Image 1. Immunohistochemistry of paraffin-embedded Mouse kidney using WIPI2 Polyclonal Antibody at dilution of 1:100 (40x lens).



Western Blotting

Image 2. Western blot analysis of extracts of various cell lines using WIPI2 Polyclonal Antibody at dilution of 1:1000.



Immunohistochemistry (Paraffin-embedded Sections)

Image 3. Immunohistochemistry of paraffin-embedded Human kidney using WIPI2 Polyclonal Antibody at dilution of 1:100 (40x lens).