

Datasheet for ABIN7011966
anti-PLA2G4C antibody



[Go to Product page](#)

2 Images

Overview

| | |
|--------------|---|
| Quantity: | 60 µL |
| Target: | PLA2G4C |
| Reactivity: | Human |
| Host: | Rabbit |
| Clonality: | Polyclonal |
| Conjugate: | This PLA2G4C antibody is un-conjugated |
| Application: | Immunohistochemistry (IHC), Immunofluorescence (IF) |

Product Details

| | |
|------------------|--|
| Immunogen: | Recombinant fusion protein of human PLA2G4C (NP_003697.2). |
| Isotype: | IgG |
| Characteristics: | Polyclonal Antibody |
| Purification: | Affinity purification |

Target Details

| | |
|-------------------|--|
| Target: | PLA2G4C |
| Alternative Name: | PLA2G4C (PLA2G4C Products) |
| Background: | This gene encodes a protein which is a member of the phospholipase A2 enzyme family which hydrolyzes glycerophospholipids to produce free fatty acids and lysophospholipids, both of which serve as precursors in the production of signaling molecules. The encoded protein has been shown to be a calcium-independent and membrane bound enzyme. Multiple transcript |

Target Details

variants encoding different isoforms have been found for this gene.

| | |
|-----------|---|
| Gene ID: | 8605 |
| UniProt: | Q9UP65 |
| Pathways: | Inositol Metabolic Process , VEGF Signaling |

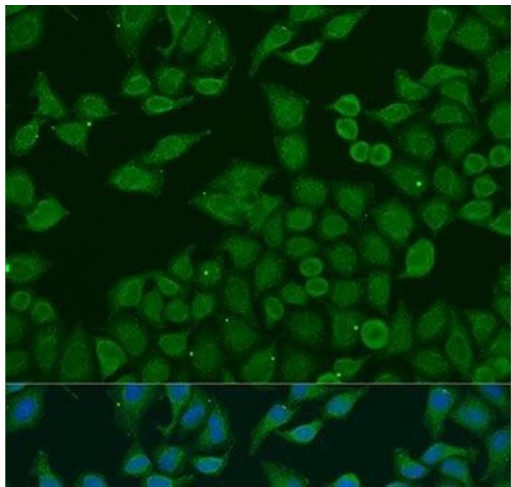
Application Details

| | |
|--------------------|------------------------------|
| Application Notes: | IHC 1:50-1:200 IF 1:50-1:200 |
| Restrictions: | For Research Use only |

Handling

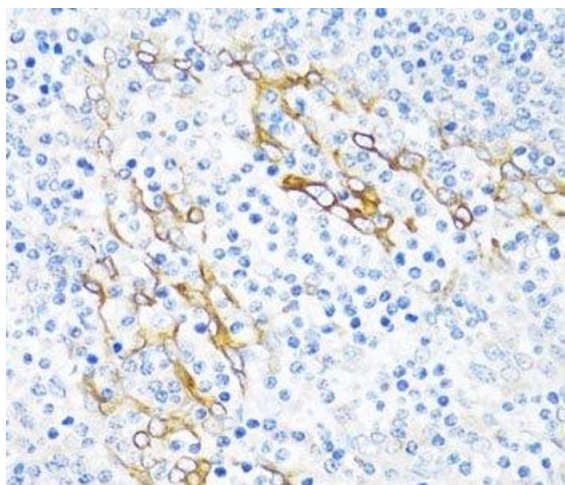
| | |
|--------------------|--|
| Format: | Liquid |
| Concentration: | 1 mg/mL |
| Buffer: | PBS with 0.02 % sodium azide, 50 % glycerol, pH 7.3 |
| Preservative: | Sodium azide |
| Precaution of Use: | This product contains Sodium azide: a POISONOUS AND HAZARDOUS SUBSTANCE which should be handled by trained staff only. |
| Storage: | -20 °C |
| Storage Comment: | Store at -20°C. Avoid freeze / thaw cycles. |

Images



Immunofluorescence

Image 1. Immunofluorescence analysis of U2OS cells using PLA2G4C Polyclonal Antibody at dilution of 1:100. Blue: DAPI for nuclear staining.



Immunohistochemistry (Paraffin-embedded Sections)

Image 2. Immunohistochemistry of paraffin-embedded Human tonsil using PLA2G4C Polyclonal Antibody at dilution of 1:100 (40x lens).