

Datasheet for ABIN701200

**anti-Tuberin antibody (AA 1601-1750)**

3 Images

1 Publication

[Go to Product page](#)

## Overview

Quantity:	100 µL
Target:	Tuberin (TSC2)
Binding Specificity:	AA 1601-1750
Reactivity:	Human, Mouse, Rat
Host:	Rabbit
Clonality:	Polyclonal
Conjugate:	This Tuberin antibody is un-conjugated
Application:	ELISA, Immunofluorescence (Paraffin-embedded Sections) (IF (p)), Immunofluorescence (Cultured Cells) (IF (cc)), Immunohistochemistry (Paraffin-embedded Sections) (IHC (p)), Immunohistochemistry (Frozen Sections) (IHC (fro))

## Product Details

Immunogen:	KLH conjugated synthetic peptide derived from human Tuberin
Isotype:	IgG
Cross-Reactivity:	Human, Mouse, Rat
Predicted Reactivity:	Dog,Cow,Pig,Horse,Rabbit
Purification:	Purified by Protein A.

## Target Details

Target:	Tuberin (TSC2)
---------	----------------

## Target Details

Alternative Name:	Tuberin ( <a href="#">TSC2 Products</a> )
Background:	<p>Synonyms: LAM, TSC4, PPP1R160, Tuberin, Tuberous sclerosis 2 protein, TSC2</p> <p>Background: In complex with TSC1, inhibits the nutrient-mediated or growth factor-stimulated phosphorylation of S6K1 and EIF4EBP1 by negatively regulating mTORC1 signaling. Acts as a GTPase-activating protein (GAP) for the small GTPase RHEB, a direct activator of the protein kinase activity of mTORC1. Implicated as a tumor suppressor. Involved in microtubule-mediated protein transport, but this seems to be due to unregulated mTOR signaling.</p> <p>Stimulates weakly the intrinsic GTPase activity of the Ras-related proteins RAP1A and RAB5 in vitro. Mutations in TSC2 lead to constitutive activation of RAP1A in tumors.</p>
Gene ID:	7249
UniProt:	<a href="#">P49815</a>
Pathways:	<a href="#">RTK Signaling</a> , <a href="#">AMPK Signaling</a> , <a href="#">Fc-epsilon Receptor Signaling Pathway</a> , <a href="#">EGFR Signaling Pathway</a> , <a href="#">Neurotrophin Signaling Pathway</a> , <a href="#">Regulation of Cell Size</a> , <a href="#">Tube Formation</a> , <a href="#">Protein targeting to Nucleus</a>

## Application Details

Application Notes:	ELISA 1:500-1000 IHC-P 1:200-400 IHC-F 1:100-500 IF(IHC-P) 1:50-200 IF(IHC-F) 1:50-200 IF(ICC) 1:50-200
Restrictions:	For Research Use only

## Handling

Format:	Liquid
Concentration:	1 µg/µL
Buffer:	0.01M TBS( pH 7.4) with 1 % BSA, 0.02 % Proclin300 and 50 % Glycerol.
Preservative:	ProClin
Precaution of Use:	This product contains ProClin: a POISONOUS AND HAZARDOUS SUBSTANCE, which should be handled by trained staff only.

## Handling

Storage: 4 °C, -20 °C

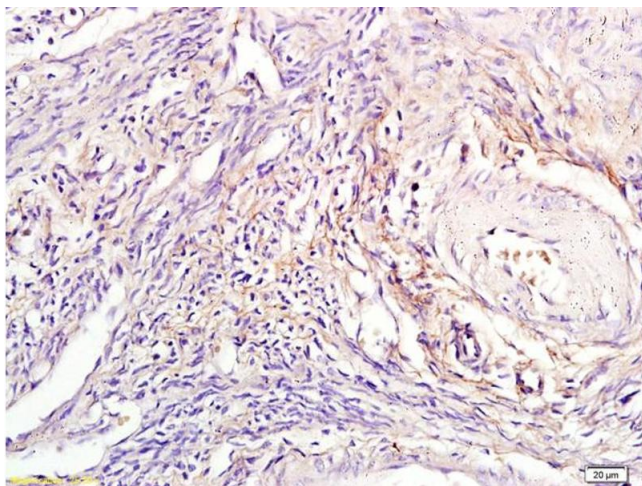
Storage Comment: Shipped at 4°C. Store at -20°C for one year. Avoid repeated freeze/thaw cycles.

Expiry Date: 12 months

## Publications

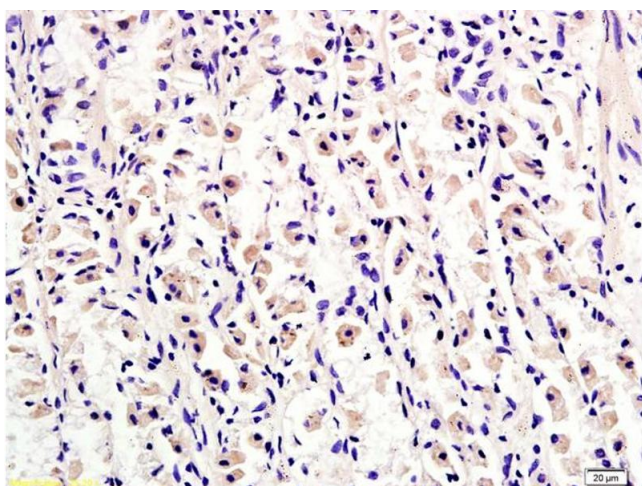
Product cited in: Wang, Chen, Deng, Bian, Huang, Lei, Lv, Liu, Li: "Repression of TSC1/TSC2 mediated by MeCP2 regulates human embryo lung fibroblast cell differentiation and proliferation." in: **International journal of biological macromolecules**, Vol. 96, pp. 578-588, (2017) ([PubMed](#)).

## Images



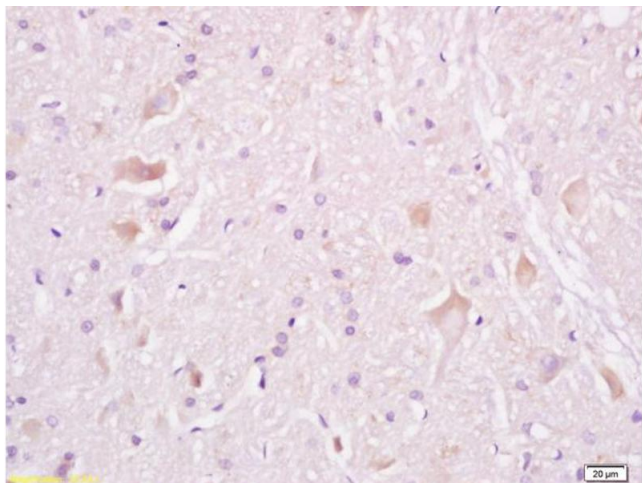
### Immunohistochemistry

**Image 1.** Formalin-fixed and paraffin embedded human endometrial tissue labeled with Anti-Tuberin/TSC2 Polyclonal Antibody, Unconjugated (ABIN701200) at 1:300, followed by conjugation to the secondary antibody and DAB staining



### Immunohistochemistry

**Image 2.** Formalin-fixed and paraffin embedded human gastric adenocarcinoma tissue labeled with Anti-Tuberin/TSC2 Polyclonal Antibody, Unconjugated (ABIN701200) at 1:300, followed by conjugation to the secondary antibody and DAB staining



#### Immunohistochemistry

**Image 3.** Formalin-fixed and paraffin embedded rat brain tissue labeled with Anti-Tuberin/TSC2 Polyclonal Antibody, Unconjugated (ABIN701200) at 1:200, followed by conjugation to the secondary antibody and DAB staining