

Datasheet for ABIN7013176

CLEC12A Protein (AA 65-269) (His tag)[Go to Product page](#)**1** Image

Overview

Quantity:	100 µg
Target:	CLEC12A
Protein Characteristics:	AA 65-269
Origin:	Rat
Source:	HEK-293 Cells
Protein Type:	Recombinant
Purification tag / Conjugate:	This CLEC12A protein is labelled with His tag.

Product Details

Characteristics:	Rat CLEC12A / MICL / CLL-1 Protein, His Tag
Purity:	>90 % as determined by SDS-PAGE.
Endotoxin Level:	Less than 1.0 EU per µg by the LAL method.

Target Details

Target:	CLEC12A
Alternative Name:	CLEC12A (CLEC12A Products)
Background:	CLEC12A (C-type lectin domain family 12 member A) is also known as CLL1, DCAL2, MICL. Clec12a is an inhibitory receptor for uric acid crystals that regulates inflammation in response to cell death. Cell surface receptor that modulates signaling cascades and mediates tyrosine phosphorylation of target MAP kinases. Evidence of distinct disease propagating stem cells in myelodysplastic syndrome (MDS) has emerged in recent years. The role of CLEC12A in MDS,

Target Details

however, remains to be elucidated. Furthermore, CLEC12A has been proposed as a promising marker of leukaemic stem cells in AML.

Molecular Weight: 26.0 kDa

NCBI Accession: [NP_001128188](#)

Application Details

Restrictions: For Research Use only

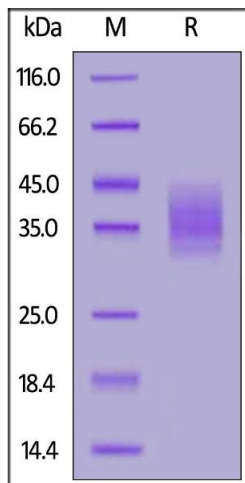
Handling

Format: Lyophilized

Buffer: PBS, pH 7.4

Storage: -20 °C

Images



SDS-PAGE

Image 1. Rat CLEC12A, His Tag on under reducing (R) condition. The gel was stained overnight with Coomassie Blue. The purity of the protein is greater than 90 % .