

Datasheet for ABIN7013192

**K-RAS Protein (AA 1-169) (His tag)**[Go to Product page](#)**1** Image

## Overview

Quantity:	100 µg
Target:	K-RAS (KRAS)
Protein Characteristics:	AA 1-169
Origin:	Human
Source:	Insect Cells
Protein Type:	Recombinant
Purification tag / Conjugate:	This K-RAS protein is labelled with His tag.

## Product Details

Characteristics:	Human KRAS Protein, His Tag
Purity:	>90 % as determined by SDS-PAGE.
Endotoxin Level:	Less than 1.0 EU per µg by the LAL method.

## Target Details

Target:	K-RAS (KRAS)
Alternative Name:	KRAS ( <a href="#">KRAS Products</a> )
Target Type:	Viral Protein
Background:	KRAS (Kirsten rat sarcoma 2 viral oncogene homolog) gene is a proto-oncogene that encodes a small GTPase transducer protein called KRAS. KRAS is also known as Ki-Ras, c-K-ras and c-Ki-ras. Ras proteins bind GDP/GTP and possess intrinsic GTPase activity. Plays an important role in the regulation of cell proliferation, promoting oncogenic events by inducing transcriptional

## Target Details

silencing of tumor suppressor genes (TSGs) in colorectal cancer (CRC) cells in a ZNF304-dependent manner. RAS is one of the most frequently mutated oncogenes in human cancer but the frequency and distribution of RAS gene mutations are not uniform. In details, mutation of glycine 12 (G12) causes RAS activation by interfering with GAP binding and GAP-stimulated GTP hydrolysis. The reference shows the pathway may as a potential therapy targets.

Molecular Weight: 21.3 kDa

NCBI Accession: [NP\\_004976](#)

## Application Details

Restrictions: For Research Use only

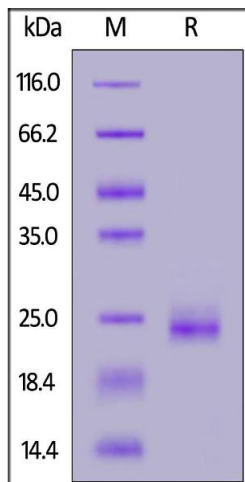
## Handling

Format: Lyophilized

Buffer: 50 mM Tris, 0.5 M NaCl, pH 7.5

Storage: -20 °C

## Images



### SDS-PAGE

**Image 1.** Human KRAS, His Tag on under reducing (R) condition. The gel was stained overnight with Coomassie Blue. The purity of the protein is greater than 90 % .