

Datasheet for ABIN7013262

ACE2 Protein (AA 18-740) (mFc Tag)**3** Images[Go to Product page](#)

Overview

Quantity:	50 µg
Target:	ACE2
Protein Characteristics:	AA 18-740
Origin:	Human
Source:	HEK-293 Cells
Protein Type:	Recombinant
Biological Activity:	Active
Purification tag / Conjugate:	This ACE2 protein is labelled with mFc Tag.

Product Details

Characteristics:	Human ACE2 / ACEH Protein, Mouse IgG1 Fc Tag (MALS verified)
Purity:	>95 % as determined by SDS-PAGE.
Endotoxin Level:	Less than 1.0 EU per µg by the LAL method.

Target Details

Target:	ACE2
Alternative Name:	ACE2 (ACE2 Products)
Background:	Angiotensin-converting enzyme 2 (ACE2) is also known as ACEH (ACE homolog), is an integral membrane protein with considerable homologous to ACE, which belongs to the peptidase M2 family. ACE2 is an exopeptidase that catalyses the conversion of angiotensin I to the nonapeptide angiotensin, or the conversion of angiotensin II to angiotensin 1-7. ACE2 may be

Target Details

an important regulator of heart function. In case of human coronaviruses SARS and HCoV-NL63 infections, ACE-2 serve as functional receptor for the spike glycoprotein of both coronaviruses. ACE2 is activated by chloride and fluoride, but not bromide and Inhibited by MLN-4760, cFP_Leu, and EDTA, but not by the ACE inhibitors lisinopril, captopril and enalaprilat. ACE2 is active from pH 6 to 9, and the optimum pH is 6.5 in the presence of 1 M NaCl.

Molecular Weight: 109.8 kDa

NCBI Accession: [NP_068576](#)

Pathways: [ACE Inhibitor Pathway](#), [Peptide Hormone Metabolism](#), [Regulation of Systemic Arterial Blood Pressure by Hormones](#), [Feeding Behaviour](#)

Application Details

Application Notes: MALS verified

Restrictions: For Research Use only

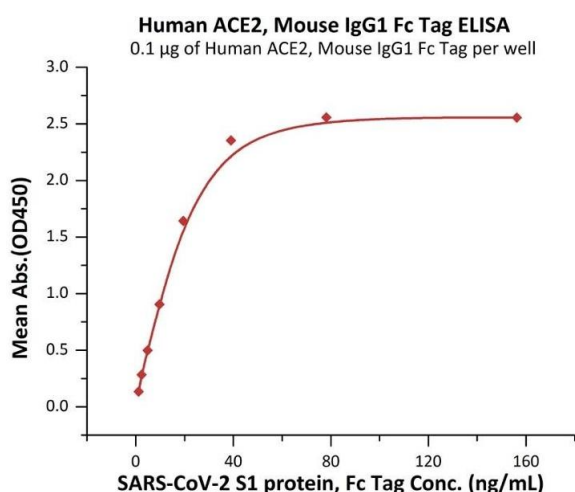
Handling

Format: Liquid

Buffer: 50 mM Tris, 150 mM NaCl, Arginine, pH 7.5

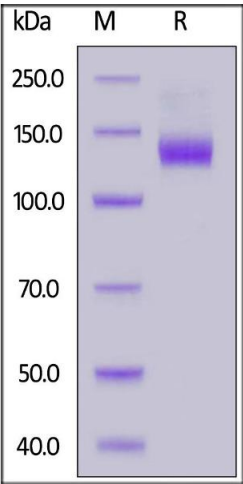
Storage: -80 °C

Images



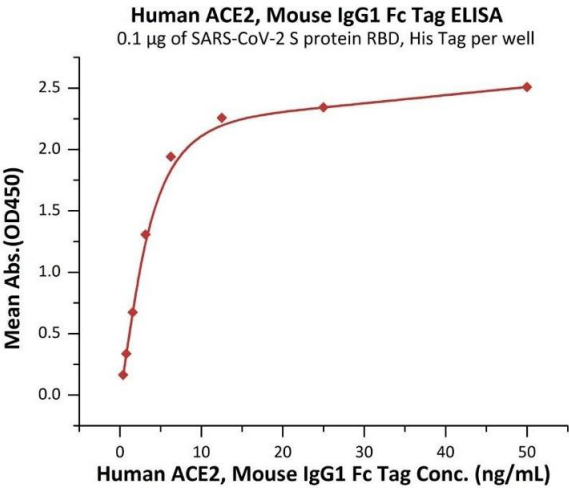
ELISA

Image 1. Immobilized Human ACE2, Mouse IgG1 Fc Tag (ABIN6972939) at 1 µg/mL (100 µL/well) can bind SARS-CoV-2 S1 protein, Fc Tag (ABIN6952624, ABIN6952647) with a linear range of 1-20 ng/mL (Routinely tested).



SDS-PAGE

Image 2. Human ACE2, Mouse IgG1 Fc Tag on under reducing (R) condition. The gel was stained overnight with Coomassie Blue. The purity of the protein is greater than 95 % .



ELISA

Image 3. Immobilized SARS-CoV-2 S protein RBD, His Tag (ABIN6952628,ABIN6952651) at 1 µg/mL (100 µL/well) can bind Human ACE2, Mouse IgG1 Fc Tag (ABIN6972939) with a linear range of 0.4-6 ng/mL (QC tested).