



Datasheet for ABIN7013278

SARS-CoV-2 Spike S1 Protein (B.1.351 - beta) (His tag)



[Go to Product page](#)

2 Images

Overview

Quantity:	100 µg
Target:	SARS-CoV-2 Spike S1
Protein Characteristics:	B.1.351 - beta
Origin:	SARS Coronavirus-2 (SARS-CoV-2), SARS CoV-2 Beta
Source:	HEK-293 Cells
Protein Type:	Recombinant
Biological Activity:	Active
Purification tag / Conjugate:	This SARS-CoV-2 Spike S1 protein is labelled with His tag.

Product Details

Sequence:	AA 16-685
Specificity:	SARS-CoV-2 S1 protein (L18F, D80A, D215G, R246I, K417N, E484K, N501Y, D614G), His Tag
Characteristics:	SARS-CoV-2 S1 protein, His Tag is expressed from human 293 cells (HEK293). It contains AA Val 16 - Arg 685 (Accession # QHD43416.1). L18F/ D80A/ D215G/ R246I/ K417N/ E484K/ N501Y/ D614G mutations were identified in the SARS-CoV-2 variant (known as 20C/501Y.V2 or B.1.351 lineage) which emerged in South Africa.
Purity:	>90 % as determined by SDS-PAGE.
Endotoxin Level:	Less than 1.0 EU per µg by the LAL method.

Target Details

Target:	SARS-CoV-2 Spike S1
---------	---------------------

Target Details

Alternative Name: SARS-CoV-2 S1 protein ([SARS-CoV-2 Spike S1 Products](#))

Target Type: Viral Protein

Background: It's been reported that Coronavirus can infect the human respiratory epithelial cells through interaction with the human ACE2 receptor. The spike protein is a large type I transmembrane protein containing two subunits, S1 and S2. S1 mainly contains a receptor binding domain (RBD), which is responsible for recognizing the cell surface receptor. S2 contains basic elements needed for the membrane fusion. The S protein plays key parts in the induction of neutralizing-antibody and T-cell responses, as well as protective immunity.

Molecular Weight: 76.8 kDa

Application Details

Restrictions: For Research Use only

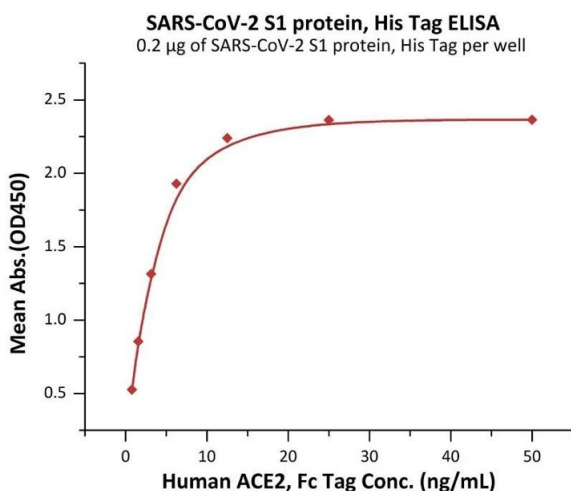
Handling

Format: Lyophilized

Buffer: PBS, pH 7.4

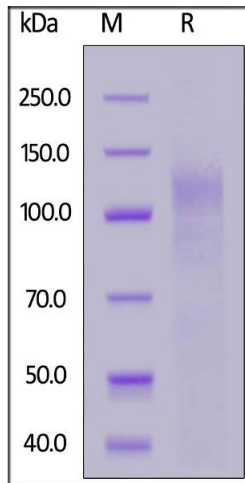
Storage: -20 °C

Images



ELISA

Image 1. Immobilized SARS-CoV-2 S1 protein, His Tag (ABIN6973238) at 2 µg/mL (100 µL/well) can bind Human ACE2, Fc Tag (ABIN6952459, ABIN6952465) with a linear range of 0.8-6 ng/mL (QC tested).



SDS-PAGE

Image 2. SARS-CoV-2 S1 protein, His Tag on under reducing (R) condition. The gel was stained overnight with Coomassie Blue. The purity of the protein is greater than 90 % .