

Datasheet for ABIN7013281

SARS-CoV-2 Spike Protein (P.1 - gamma) (His tag)[Go to Product page](#)**3** Images

Overview

Quantity:	100 µg
Target:	SARS-CoV-2 Spike
Protein Characteristics:	P.1 - gamma
Origin:	SARS Coronavirus-2 (SARS-CoV-2), SARS CoV-2 Gamma
Source:	HEK-293 Cells
Protein Type:	Recombinant
Biological Activity:	Active
Purification tag / Conjugate:	This SARS-CoV-2 Spike protein is labelled with His tag.

Product Details

Sequence:	AA 319-537
Specificity:	SARS-CoV-2 S protein RBD (K417T, E484K, N501Y), His Tag (MALS verified)
Characteristics:	SARS-CoV-2 S protein RBD (K417T, E484K, N501Y), His Tag is expressed from human 293 cells (HEK293). It contains AA Arg 319 - Lys 537 (Accession # QHD43416.1(K417T, E484K, N501Y). K417T/ E484K/ N501Y mutations were identified in the SARS-CoV-2 variant (known as variant P.1) which emerged in Brazil.
Purity:	>95 % as determined by SDS-PAGE.
Endotoxin Level:	Less than 1.0 EU per µg by the LAL method.

Target Details

Target:	SARS-CoV-2 Spike
---------	------------------

Target Details

Alternative Name: SARS-CoV-2 S protein ([SARS-CoV-2 Spike Products](#))

Target Type: Viral Protein

Background: It's been reported that Coronavirus can infect the human respiratory epithelial cells through interaction with the human ACE2 receptor. The spike protein is a large type I transmembrane protein containing two subunits, S1 and S2. S1 mainly contains a receptor binding domain (RBD), which is responsible for recognizing the cell surface receptor. S2 contains basic elements needed for the membrane fusion. The S protein plays key parts in the induction of neutralizing-antibody and T-cell responses, as well as protective immunity.

Molecular Weight: 26.5 kDa

Application Details

Application Notes: MALS verified

Restrictions: For Research Use only

Handling

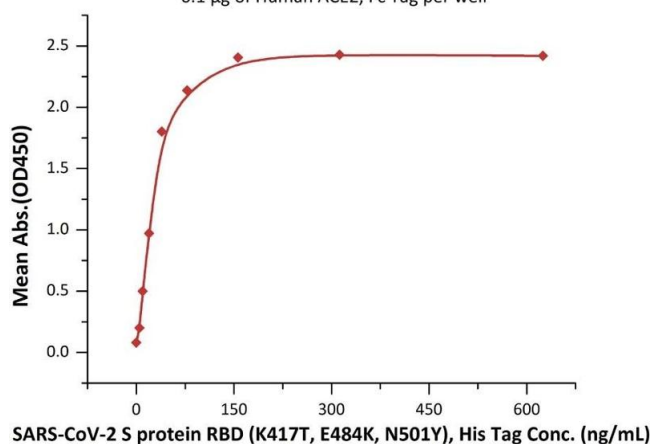
Format: Lyophilized

Buffer: PBS, pH 7.4

Storage: -20 °C

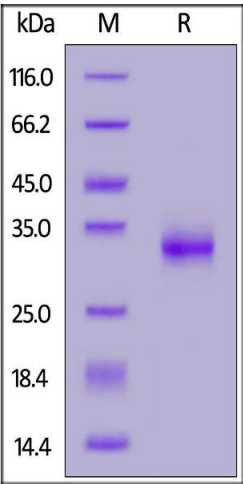
Images

SARS-CoV-2 S protein RBD (K417T, E484K, N501Y), His Tag ELISA
0.1 µg of Human ACE2, Fc Tag per well



ELISA

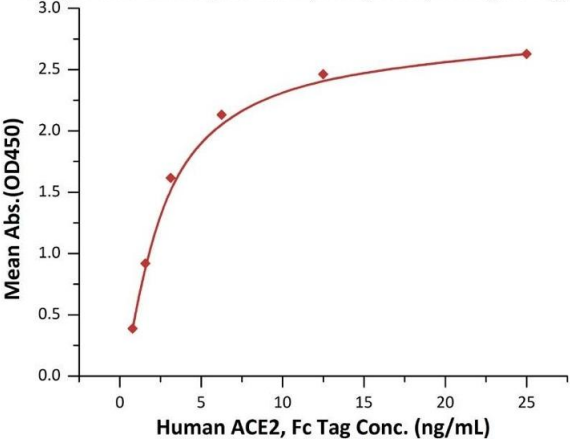
Image 1. Immobilized Human ACE2, Fc Tag (ABIN6952459, ABIN6952465) at 1 µg/mL (100 µL/well) can bind SARS-CoV-2 S protein RBD (K417T, E484K, N501Y), His Tag (ABIN6973218) with a linear range of 2-39 ng/mL (Routinely tested).



SDS-PAGE

Image 2. SARS-CoV-2 S protein RBD (K417T, E484K, N501Y), His Tag on under reducing (R) condition. The gel was stained overnight with Coomassie Blue. The purity of the protein is greater than 95 % .

SARS-CoV-2 S protein RBD (K417T, E484K, N501Y), His Tag ELISA
0.1 µg of SARS-CoV-2 S protein RBD (K417T, E484K, N501Y), His Tag per well



ELISA

Image 3. Immobilized SARS-CoV-2 S protein RBD (K417T, E484K, N501Y), His Tag (ABIN6973218) at 1 µg/mL (100 µ L/well) can bind Human ACE2, Fc Tag (ABIN6952459,ABIN6952465) with a linear range of 0.8-3 ng/mL (QC tested).