

Datasheet for ABIN7013365

SLC1A5 Protein (AA 154-224) (His tag,TRX tag)[Go to Product page](#)**1** Image

Overview

Quantity:	100 µg
Target:	SLC1A5
Protein Characteristics:	AA 154-224
Origin:	Human
Source:	Escherichia coli (E. coli)
Protein Type:	Recombinant
Purification tag / Conjugate:	This SLC1A5 protein is labelled with His tag,TRX tag.

Product Details

Sequence:	AA 154-224
Characteristics:	Human Syndecan-1 Protein, His Tag
Purity:	>90 % as determined by SDS-PAGE.
Endotoxin Level:	Less than 1.0 EU per µg by the LAL method.

Target Details

Target:	SLC1A5
Alternative Name:	SLC1A5 (SLC1A5 Products)
Background:	Sodium-dependent amino acids transporter(SLC1A5) that has a broad substrate specificity, with a preference for zwitterionic amino acids. It accepts as substrates all neutral amino acids, including glutamine, asparagine, and branched-chain and aromatic amino acids, and excludes methylated, anionic, and cationic amino acids. Through binding of the fusogenic protein

Target Details

syncytin-1/ERVW-1 may mediate trophoblasts syncytialization, the spontaneous fusion of their plasma membranes, an essential process in placental development (PubMed:10708449, PubMed:23492904).

Molecular Weight:	22.5 kDa
NCBI Accession:	NP_005619
Pathways:	Dicarboxylic Acid Transport , Warburg Effect

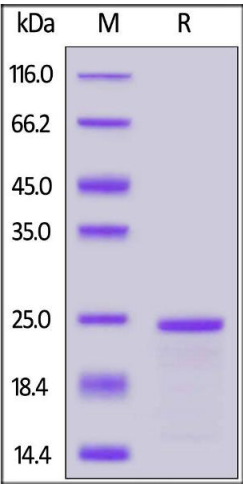
Application Details

Restrictions:	For Research Use only
---------------	-----------------------

Handling

Format:	Lyophilized
Buffer:	PBS, pH 7.4
Storage:	-20 °C

Images



SDS-PAGE

Image 1. Human SLC1A5, His Tag, TrxA Tag on under reducing (R) condition. The gel was stained overnight with Coomassie Blue. The purity of the protein is greater than 90 % .