

Datasheet for ABIN7013366  
**CD39 Protein (AA 38-478) (His tag)**[Go to Product page](#)

## 2 Images

## Overview

Quantity:	100 µg
Target:	CD39 (ENTPD1)
Protein Characteristics:	AA 38-478
Origin:	Human
Source:	HEK-293 Cells
Protein Type:	Recombinant
Biological Activity:	Active
Purification tag / Conjugate:	This CD39 protein is labelled with His tag.

## Product Details

Characteristics:	Human CD39 / ENTPD1 Protein, His Tag (active enzyme)
Purity:	>95 % as determined by SDS-PAGE.
Endotoxin Level:	Less than 1.0 EU per µg by the LAL method.

## Target Details

Target:	CD39 (ENTPD1)
Alternative Name:	CD39 ( <a href="#">ENTPD1 Products</a> )
Background:	CD39 is also known as Ectonucleoside triphosphate diphosphohydrolase 1, ENTPD1, NTPDase 1, Ecto-ATPDase 1, in the nervous system, could hydrolyze ATP and other nucleotides to regulate purinergic neurotransmission. Could also be implicated in the prevention of platelet aggregation by hydrolyzing platelet-activating ADP to AMP. Hydrolyzes ATP and ADP equally

Target Details

well. NTPDase-1 was originally described as CD39, a B lymphocyte cell surface marker, but it is also present on the surface of natural killer cells, T cells, and some endothelial cells. Regulatory T cells (Tregs) mediate immunosuppression through multiple, non-redundant, cell-contact dependent and independent mechanisms, a growing body of evidence suggests an important role for the CD39-CD73-adenosine pathway. CD39 ectonucleotidase is the rate-limiting enzyme of a cascade leading to the generation of suppressive adenosine that alters CD4 and CD8 T cell and natural killer cell antitumor activities.

Molecular Weight:	52.3 kDa
NCBI Accession:	<a href="#">NP_001767</a>

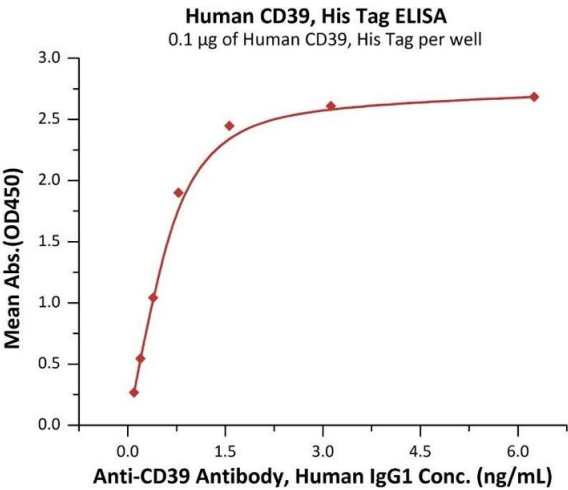
Application Details

Restrictions:	For Research Use only
---------------	-----------------------

Handling

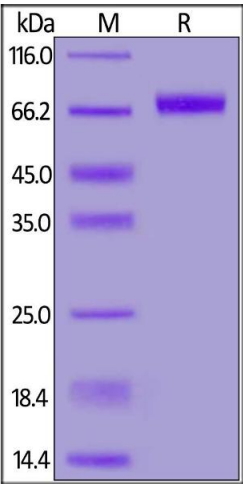
Format:	Lyophilized
Buffer:	Tris and NaCl, pH 8.0
Storage:	-20 °C

Images



ELISA

**Image 1.** Immobilized Human CD39, His Tag (ABIN6972990) at 1 µg/mL (100 µL/well) can bind A Antibody, Human IgG1 with a linear range of 0.1-0.8 ng/mL (QC tested).



SDS-PAGE

**Image 2.** Human CD39, His Tag on under reducing (R) condition. The gel was stained overnight with Coomassie Blue. The purity of the protein is greater than 95 % .