

Datasheet for ABIN7013370
GPC2 Protein (AA 24-554) (His tag)

2 Images

[Go to Product page](#)

Overview

Quantity:	100 µg
Target:	GPC2
Protein Characteristics:	AA 24-554
Origin:	Human
Source:	HEK-293 Cells
Protein Type:	Recombinant
Biological Activity:	Active
Purification tag / Conjugate:	This GPC2 protein is labelled with His tag.

Product Details

Characteristics:	Human Glypican 2 / GPC2 Protein, His Tag
Purity:	>90 % as determined by SDS-PAGE.
Endotoxin Level:	Less than 1.0 EU per µg by the LAL method.

Target Details

Target:	GPC2
Alternative Name:	Glypican 2 (GPC2 Products)
Background:	<p>Glypican 2 (GPC2), also known cerebroglycan, is a glycoposphatidylinositol-linked integral membrane heparan sulfate proteoglycan found in the developing nervous system.</p> <p>Cerebroglycan participates in cell adhesion and is thought to regulate the growth and guidance of axons. Cerebroglycan has especially high affinity for laminin-1. GPC2 silencing inactivates</p>

Target Details

Wnt/ β -catenin signaling and reduces the expression of N-Myc, an oncogenic driver of neuroblastoma tumorigenesis. Immunotoxins and chimeric antigen receptor (CAR) T cells targeting GPC2 inhibit neuroblastoma growth in mouse models. A GPC3 specific antibody drug conjugate (ADC) can also inhibit neuroblastoma cell proliferation.

Molecular Weight:	60.0 kDa
NCBI Accession:	NP_689955
Pathways:	Glycosaminoglycan Metabolic Process

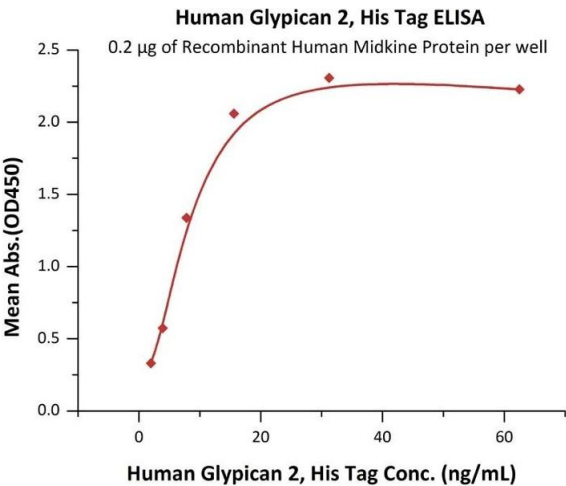
Application Details

Restrictions:	For Research Use only
---------------	-----------------------

Handling

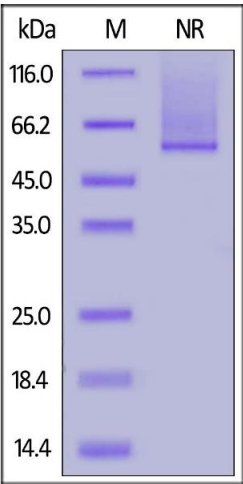
Format:	Lyophilized
Buffer:	PBS, pH 7.4
Storage:	-20 °C

Images



ELISA

Image 1. Immobilized Recombinant Human Midkine Protein at 2 μ g/mL (100 μ L/well) can bind Human Glypican 2, His Tag (ABIN6973078) with a linear range of 2-16 ng/mL (QC tested).



SDS-PAGE

Image 2. Human Glypican 2, His Tag on under ing (NR) condition. The gel was stained overnight with Coomassie Blue. The purity of the protein is greater than 90 % .