



[Go to Product page](#)

Datasheet for ABIN7013385

## SIGLEC10 Protein (AA 17-546) (His tag)

### 2 Images

#### Overview

Quantity:	100 µg
Target:	SIGLEC10
Protein Characteristics:	AA 17-546
Origin:	Human
Source:	HEK-293 Cells
Protein Type:	Recombinant
Biological Activity:	Active
Purification tag / Conjugate:	This SIGLEC10 protein is labelled with His tag.

#### Product Details

Sequence:	AA 17-546
Characteristics:	FITC-Labeled Human Siglec-3 / CD33 Protein, His Tag
Purity:	>95 % as determined by SDS-PAGE.
Endotoxin Level:	Less than 1.0 EU per µg by the LAL method.

#### Target Details

Target:	SIGLEC10
Alternative Name:	Siglec-10 ( <a href="#">SIGLEC10 Products</a> )
Background:	The siglecs (sialic acid-binding Ig-like lectins) are a distinct subset of the Ig superfamily with adhesion-molecule-like structure. We describe here a novel member of the siglec protein family

## Target Details

that shares a similar structure including five Ig-like domains, a transmembrane domain, and a cytoplasmic tail containing two ITIM-signaling motifs. Siglec-10 was identified through database mining of an asthmatic eosinophil EST library. The Siglec-10-VAP-1 interaction seems to mediate lymphocyte adhesion to endothelium and has the potential to modify the inflammatory microenvironment via the enzymatic end products.

Molecular Weight: 60.1 kDa

NCBI Accession: [NP\\_149121](#)

## Application Details

Restrictions: For Research Use only

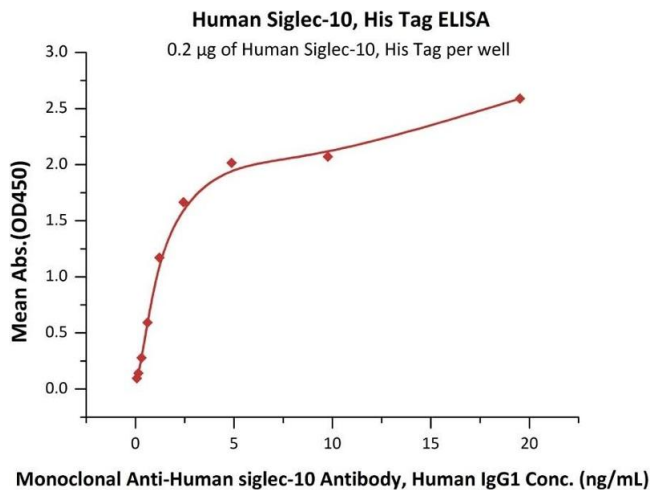
## Handling

Format: Lyophilized

Buffer: 25 mM MES, 150 mM NaCl, Arginine, pH 5.5

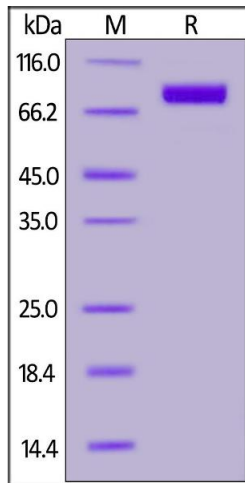
Storage: -20 °C

## Images



### ELISA

**Image 1.** Immobilized Human Siglec-10, His Tag (ABIN6973263) at 2 µg/mL (100 µL/well) can bind Monoclonal A siglec-10 Antibody, Human IgG1 with a linear range of 0.08-2 ng/mL (QC tested).



### SDS-PAGE

**Image 2.** Human Siglec-10, His Tag on under reducing (R) condition. The gel was stained overnight with Coomassie Blue. The purity of the protein is greater than 95 % .