

Datasheet for ABIN7013392
GPC2 Protein (AA 24-553) (Fc Tag)[Go to Product page](#)

1 Image

Overview

Quantity:	100 µg
Target:	GPC2
Protein Characteristics:	AA 24-553
Origin:	Human
Source:	HEK-293 Cells
Protein Type:	Recombinant
Purification tag / Conjugate:	This GPC2 protein is labelled with Fc Tag.

Product Details

Purity:	>95 % as determined by SDS-PAGE.
Endotoxin Level:	Less than 1.0 EU per µg by the LAL method.

Target Details

Target:	GPC2
Alternative Name:	Glypican 2 (GPC2 Products)
Background:	<p>Glypican 2 (GPC2), also known cerebroglycan, is a glycoposphatidylinositol-linked integral membrane heparan sulfate proteoglycan found in the developing nervous system.</p> <p>Cerebroglycan participates in cell adhesion and is thought to regulate the growth and guidance of axons. Cerebroglycan has especially high affinity for laminin-1. GPC2 silencing inactivates Wnt/β-catenin signaling and reduces the expression of N-Myc, an oncogenic driver of neuroblastoma tumorigenesis. Immunotoxins and chimeric antigen receptor (CAR) T cells</p>

Target Details

	targeting GPC2 inhibit neuroblastoma growth in mouse models. A GPC3 specific antibody drug conjugate (ADC) can also inhibit neuroblastoma cell proliferation.
Molecular Weight:	37.3 kDa & 47.3 kDa
NCBI Accession:	NP_689955
Pathways:	Glycosaminoglycan Metabolic Process

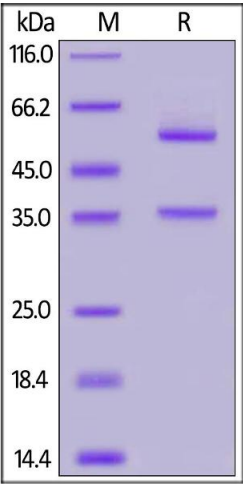
Application Details

Restrictions:	For Research Use only
---------------	-----------------------

Handling

Format:	Lyophilized
Buffer:	Tris with Glycine, Arginine and NaCl, pH 7.5
Storage:	-20 °C

Images



SDS-PAGE

Image 1. Human Glypican 2, Fc Tag on under reducing (R) condition. The gel was stained overnight with Coomassie Blue. The purity of the protein is greater than 95 % .