

Datasheet for ABIN7013399
CD6 Protein (CD6) (AA 18-398) (His tag)



[Go to Product page](#)

1 Image

Overview

Quantity:	100 µg
Target:	CD6
Protein Characteristics:	AA 18-398
Origin:	Human
Source:	HEK-293 Cells
Protein Type:	Recombinant
Purification tag / Conjugate:	This CD6 protein is labelled with His tag.

Product Details

Purity:	>90 % as determined by SDS-PAGE.
Endotoxin Level:	Less than 1.0 EU per µg by the LAL method.

Target Details

Target:	CD6
Alternative Name:	CD6 (CD6 Products)
Background:	CD6 (Cluster of Differentiation 6) is a cell surface glycoprotein that is involved in T cell activation and a member of the scavenger receptor cysteine rich protein superfamily (SRCRSF). CD6 is expressed at low levels on immature thymocytes and at high levels on mature thymocytes. The majority of peripheral blood T cells, a subset of B cells, and a subset of neuronal cells express CD6. CD6 appears to play a role as both a costimulatory molecule in T cell activation and as an adhesion receptor. Studies demonstrating a mitogenic effect for T

Target Details

cells with some CD6 specific monoclonal antibodies, in conjunction with either accessory cells or PMA and anti-CD2 mAb, support the concept of CD6 as a co stimulatory molecule.

Molecular Weight: 42.5 kDa

NCBI Accession: [NP_006716](#)

Application Details

Restrictions: For Research Use only

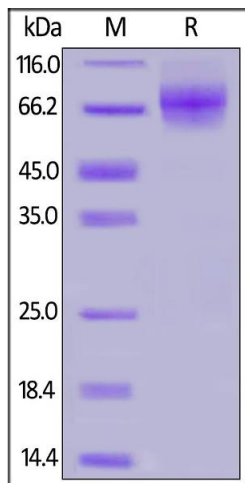
Handling

Format: Lyophilized

Buffer: PBS, pH 7.4

Storage: -20 °C

Images



SDS-PAGE

Image 1. Human CD6, His Tag on under reducing (R) condition. The gel was stained overnight with Coomassie Blue. The purity of the protein is greater than 90 % .