

Datasheet for ABIN7013416

TACSTD2 Protein (AA 27-274) (Fc Tag)



[Go to Product page](#)

2 Images

Overview

Quantity:	200 µg
Target:	TACSTD2
Protein Characteristics:	AA 27-274
Origin:	Human
Source:	HEK-293 Cells
Protein Type:	Recombinant
Purification tag / Conjugate:	This TACSTD2 protein is labelled with Fc Tag.

Product Details

Sequence:	AA 27-274
Characteristics:	Cynomolgus TSLP Protein, His Tag
Purity:	>95 % as determined by SDS-PAGE.
Endotoxin Level:	Less than 1.0 EU per µg by the LAL method.

Target Details

Target:	TACSTD2
Alternative Name:	TROP-2 (TACSTD2 Products)
Background:	TROP-2 is a single-copy gene in human cells, and encodes a type-1 transmembrane glycoprotein which is over-expressed in various malignancies, also referred to as tumor associated calcium signal transducer 2 (TACSTD2), GA733-1 or M1S1. TROP-2 is related to epithelial cell adhesion molecule (EpCAM), also called TROP-1, gp40, and KSA. Trop-1 and Trop-

Target Details

2 are homologous to serum IGF-II-binding proteins and appear as signal transducers. Thus, they likely represent novel cell-surface receptors and may play a role in regulating the growth of carcinoma cells.

Molecular Weight:	54.3 kDa
NCBI Accession:	NP_002344

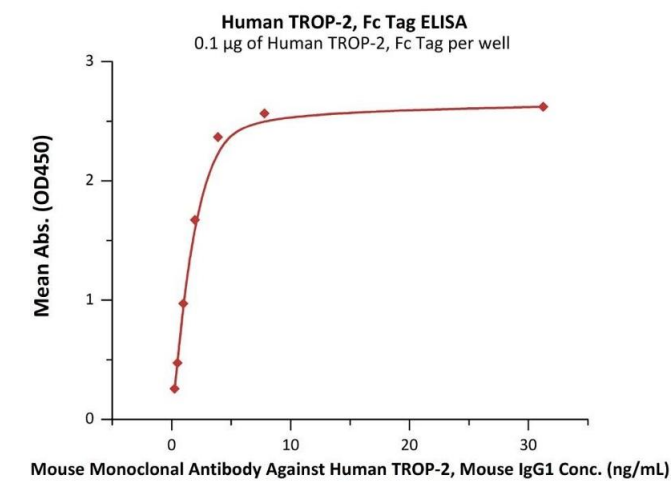
Application Details

Restrictions:	For Research Use only
---------------	-----------------------

Handling

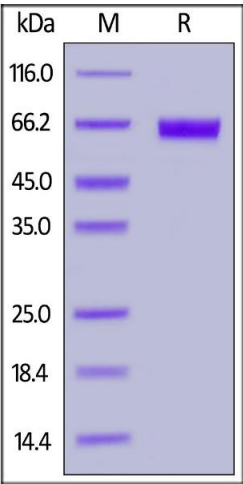
Format:	Lyophilized
Buffer:	Tris with Glycine, Arginine and NaCl, pH 7.5
Storage:	-20 °C

Images



ELISA

Image 1. Immobilized Human TROP-2, Fc Tag (ABIN6973298) at 1 µg/mL (100 µL/well) can bind Mouse Monoclonal Antibody Against Human TROP-2, Mouse IgG1 with a linear range of 0.2-2 ng/mL (QC tested).



SDS-PAGE

Image 2. Human TROP-2, Fc Tag on under reducing (R) condition. The gel was stained overnight with Coomassie Blue. The purity of the protein is greater than 95 % .