

Datasheet for ABIN7013421

GUCY2C Protein (AA 24-430) (Fc Tag)

2 Images

[Go to Product page](#)

Overview

Quantity:	100 µg
Target:	GUCY2C
Protein Characteristics:	AA 24-430
Origin:	Human
Source:	HEK-293 Cells
Protein Type:	Recombinant
Biological Activity:	Active
Purification tag / Conjugate:	This GUCY2C protein is labelled with Fc Tag.

Product Details

Characteristics:	Human GUCY2C / Guanylyl cyclase C Protein, Fc Tag
Purity:	>95 % as determined by SDS-PAGE.
Endotoxin Level:	Less than 1.0 EU per µg by the LAL method.

Target Details

Target:	GUCY2C
Alternative Name:	GUCY2C (GUCY2C Products)
Background:	<p>GUCY2C (Guanylyl Cyclase C), also known as heat-stable enterotoxin receptor, is a type I transmembrane protein of the guanylate cyclase (gc) family that signal by producing cGMP.</p> <p>Guanylate cyclase C (GUCY2C) and its hormones guanylin and uroguanylin have recently emerged as one paracrine axis defending intestinal mucosal integrity against mutational,</p>

Target Details

chemical, and inflammatory injury. GUCY2C murine CAR-T cells recognized and killed human colorectal cancer cells endogenously expressing GUCY2C. Thus, we have identified a human GUCY2C-specific CAR-T cell therapy approach that may be developed for the treatment of GUCY2C-expressing metastatic colorectal cancer.

Molecular Weight: 72.5 kDa

NCBI Accession: [NP_004954](#)

Application Details

Restrictions: For Research Use only

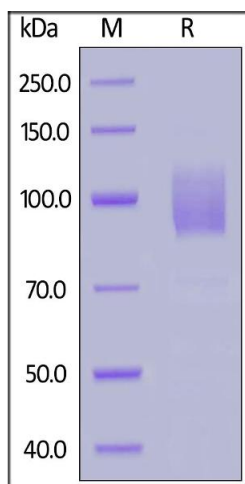
Handling

Format: Lyophilized

Buffer: 50 mM Tris, 100 mM Glycine, 150 mM NaCl, pH 7.5

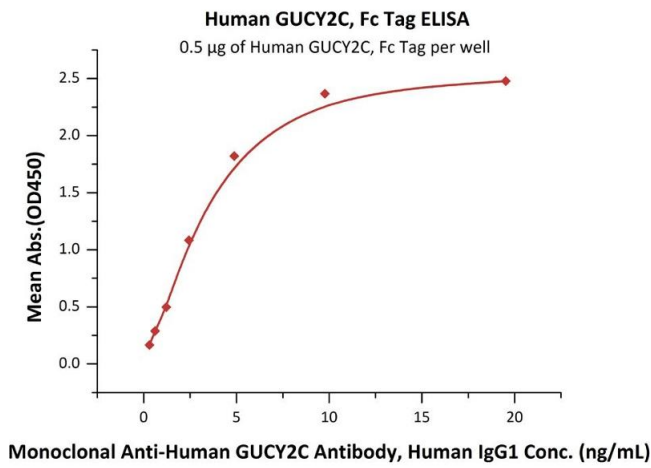
Storage: -20 °C

Images



SDS-PAGE

Image 1. Human GUCY2C, Fc Tag on under reducing (R) condition. The gel was stained overnight with Coomassie Blue. The purity of the protein is greater than 95 % .



ELISA

Image 2. Immobilized Human GUCY2C, Fc Tag (ABIN6973086) at 5 µg/mL (100 µL/well) can bind Monoclonal A GUCY2C Antibody, Human IgG1 with a linear range of 0.3-5 ng/mL (QC tested).