

Datasheet for ABIN7013426

PSMA Protein (AA 44-750) (Fc Tag)**2** Images[Go to Product page](#)

Overview

Quantity:	100 µg
Target:	PSMA (FOLH1)
Protein Characteristics:	AA 44-750
Origin:	Human
Source:	HEK-293 Cells
Protein Type:	Recombinant
Biological Activity:	Active
Purification tag / Conjugate:	This PSMA protein is labelled with Fc Tag.

Product Details

Characteristics:	Human PSMA / FOLH1 Protein, Fc Tag
Purity:	>95 % as determined by SDS-PAGE.
Endotoxin Level:	Less than 1.0 EU per µg by the LAL method.

Target Details

Target:	PSMA (FOLH1)
Alternative Name:	PSMA (FOLH1 Products)
Background:	Prostate-specific membrane antigen (PSMA) is also known as Folate hydrolase 1 (FOLH1), Glutamate carboxypeptidase 2 (GCP2), N-acetylated-alpha-linked acidic dipeptidase I (NAALAD1), which belongs to the peptidase M28 family and M28B subfamily. FOLH1 / PSMA is stable at pH greater than 6.5. FOLH1 / PSMA is a type II transmembrane zinc metallopeptidase

Target Details

that is most highly expressed in the nervous system, prostate, kidney, and small intestine. FOLH1 / GCP-2 is homodimer and binds 2 zinc ions per subunit, and required for NAALADase activity. The catalytic activity of PSMA involved in releasing of an unsubstituted, C-terminal glutamyl residue, typically from Ac-Asp-Glu or folylpoly - gamma - glutamates. FOLH1 / GCP-2 / PSMA has both folate hydrolase and N - acetylated - alpha - linked - acidic dipeptidase (NAALADase) activity and has a preference for tri-alpha-glutamate peptides. GCP-2 / PSMA involved in prostate tumor progression and also exhibits a dipeptidyl-peptidase IV type activity. In vitro, cleaves Gly-Pro-AMC.

Molecular Weight:	106.0 kDa
NCBI Accession:	NP_058050

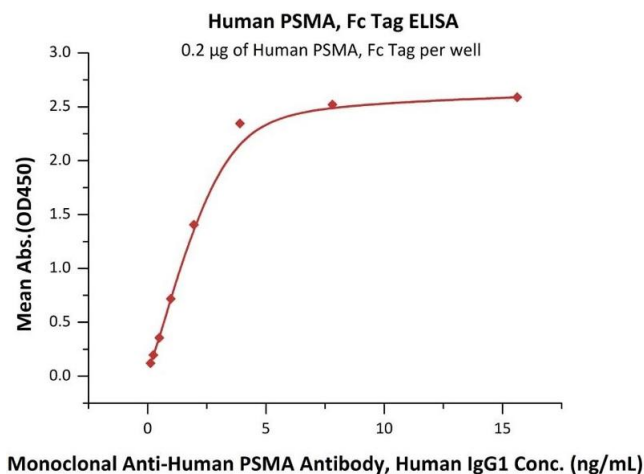
Application Details

Restrictions:	For Research Use only
---------------	-----------------------

Handling

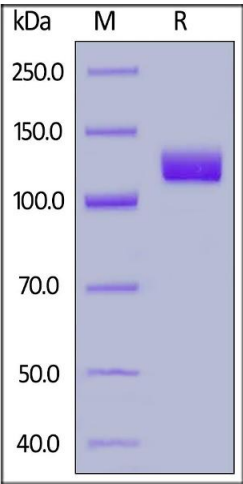
Format:	Lyophilized
Buffer:	50 mM Tris, 100 mM Glycine, 150 mM NaCl, pH 7.5
Storage:	-20 °C

Images



ELISA

Image 1. Immobilized Human PSMA, Fc Tag (ABIN6973203) at 2 µg/mL (100 µL/well) can bind Monoclonal A PSMA Antibody, Human IgG1 with a linear range of 0.1-2 ng/mL (QC tested).



SDS-PAGE

Image 2. Human PSMA, Fc Tag on under reducing (R) condition. The gel was stained overnight with Coomassie Blue. The purity of the protein is greater than 95 % .