

Datasheet for ABIN7013444

CD8 alpha Protein (AA 22-182) (His tag)**3** Images[Go to Product page](#)

Overview

Quantity:	50 µg
Target:	CD8 alpha (CD8A)
Protein Characteristics:	AA 22-182
Origin:	Human
Source:	HEK-293 Cells
Protein Type:	Recombinant
Biological Activity:	Active
Purification tag / Conjugate:	This CD8 alpha protein is labelled with His tag.

Product Details

Characteristics:	Human CD8 alpha / CD8A Protein, His Tag
Purity:	>95 % as determined by SDS-PAGE.
Endotoxin Level:	Less than 1.0 EU per µg by the LAL method.

Target Details

Target:	CD8 alpha (CD8A)
Alternative Name:	CD8 alpha (CD8A Products)
Background:	Integral membrane glycoprotein that plays an essential role in the immune response and serves multiple functions in responses against both external and internal offenses. Interacts simultaneously with the T-cell receptor (TCR) and the MHC class I proteins presented by antigen presenting cells (APCs). In turn, recruits the Src kinase LCK to the vicinity of the TCR-

Target Details

CD3 complex. In NK-cells, the presence of CD8A homodimers at the cell surface provides a survival mechanism allowing conjugation and lysis of multiple target cells. CD8A homodimer molecules also promote the survival and differentiation of activated lymphocytes into memory CD8 T-cells.

Molecular Weight: 19.5 kDa

NCBI Accession: [NP_001759](#)

Pathways: [TCR Signaling](#)

Application Details

Restrictions: For Research Use only

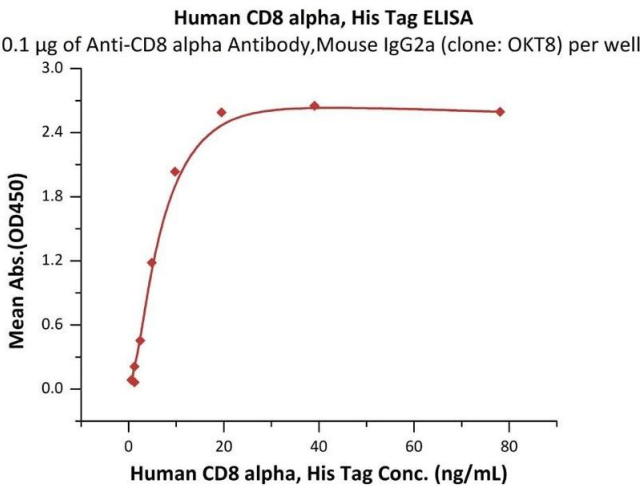
Handling

Format: Lyophilized

Buffer: PBS, pH 7.4

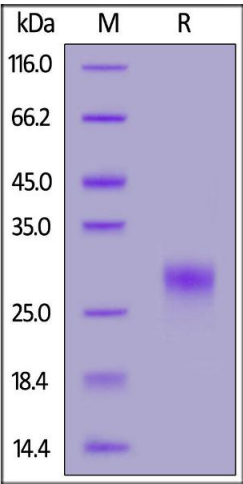
Storage: -20 °C

Images



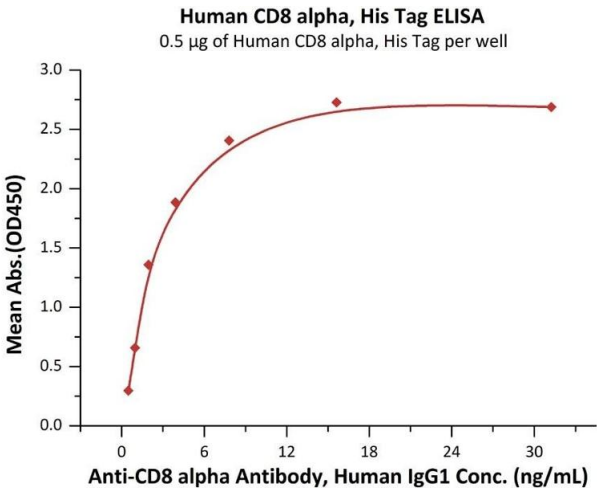
ELISA

Image 1. Immobilized Anti-CD8 alpha Antibody, Mouse IgG2a (clone: OKT8) at 1 µg/mL (100 µL/well) can bind Human CD8 alpha, His Tag (ABIN6973024) with a linear range of 0.6-10 ng/mL (Routinely tested).



SDS-PAGE

Image 2. Human CD8 alpha, His Tag on under reducing (R) condition. The gel was stained overnight with Coomassie Blue. The purity of the protein is greater than 95 % .



ELISA

Image 3. Immobilized Human CD8 alpha, His Tag (ABIN6973024) at 1 µg/mL (100 µL/well) can bind Anti-CD8 alpha Antibody, Mouse IgG2a (clone: OKT8) with a linear range of 0.2-39 ng/mL (QC tested).