

Datasheet for ABIN7013449

**IL17F Protein (AA 31-163) (His tag)****3** Images[Go to Product page](#)

## Overview

Quantity:	50 µg
Target:	IL17F
Protein Characteristics:	AA 31-163
Origin:	Human
Source:	HEK-293 Cells
Protein Type:	Recombinant
Biological Activity:	Active
Purification tag / Conjugate:	This IL17F protein is labelled with His tag.

## Product Details

Characteristics:	Human IL-17F Protein, His Tag
Purity:	>95 % as determined by SDS-PAGE.
Endotoxin Level:	Less than 1.0 EU per µg by the LAL method.

## Target Details

Target:	IL17F
Alternative Name:	IL-17F ( <a href="#">IL17F Products</a> )
Background:	Interleukin-17F (IL17F) is also known as Interleukin-24 (IL24), Cytokine ML-1, is a secreted disulfide-linked homodimer which belongs to the IL-17 family. There are at least six members of the IL-17 family in humans and in mice: IL-17A, IL-17B, IL-17C, IL-17D, IL-17E (also called IL-25) and IL-17F (also called IL-24). IL-17 represents a family of structurally related cytokines that

## Target Details

share a highly conserved C-terminal region but differ from one another in their N-terminal regions and in their distinct biological roles. IL-17F / IL-24 is expressed in activated, but not resting, CD4+ T-cells and activated monocytes. IL17F / Interleukin-24 stimulates the production of other cytokines such as IL-6, IL-8 and granulocyte colony-stimulating factor, and can regulate cartilage matrix turnover. IL17F / IL-24 stimulates PBMC and T-cell proliferation and Inhibits angiogenesis. Defects in IL17F are the cause of familial candidiasis type 6 (CANDF6).

Molecular Weight: 16.8 kDa

NCBI Accession: [NP\\_443104](#)

Pathways: [Cellular Response to Molecule of Bacterial Origin, Positive Regulation of Endopeptidase Activity](#)

## Application Details

Restrictions: For Research Use only

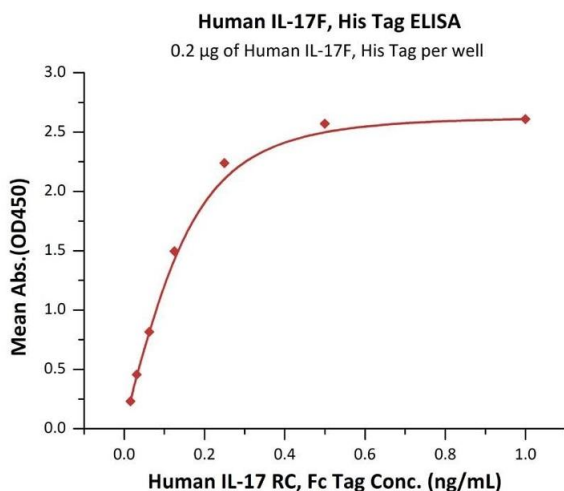
## Handling

Format: Lyophilized

Buffer: PBS, pH 7.4

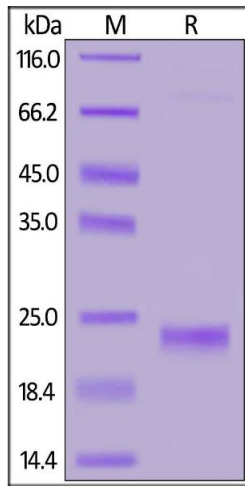
Storage: -20 °C

## Images



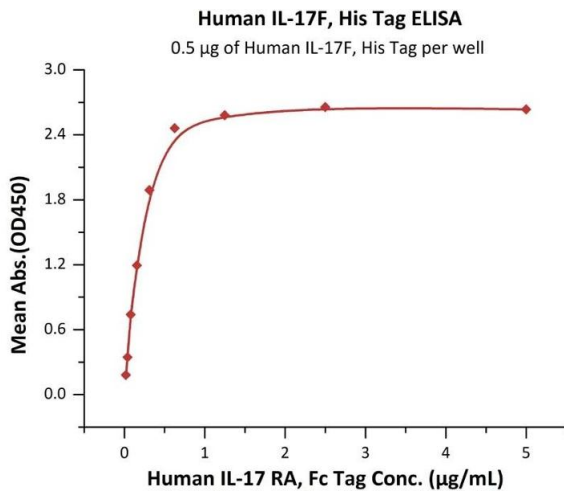
### ELISA

**Image 1.** Immobilized Human IL-17F, His Tag (ABIN6973111) at 2 µg/mL (100 µL/well) can bind Human IL-17 RC, Fc Tag (ABIN6973109) with a linear range of 0.016-0.25 µg/mL (Routinely tested).



### SDS-PAGE

**Image 2.** Human IL-17F, His Tag on under reducing (R) condition. The gel was stained overnight with Coomassie Blue. The purity of the protein is greater than 95 % .



### ELISA

**Image 3.** Immobilized Human IL-17F, His Tag (ABIN6973111) at 5 µg/mL (100 µL/well) can bind Human IL-17 RA, Fc Tag (ABIN2181346, ABIN2181345) with a linear range of 0.02-0.625 µg/mL (QC tested).