

Datasheet for ABIN7013457

Mesothelin Protein (MSLN) (AA 296-580) (His tag)[Go to Product page](#)**3** Images

Overview

Quantity:	100 µg
Target:	Mesothelin (MSLN)
Protein Characteristics:	AA 296-580
Origin:	Cynomolgus
Source:	HEK-293 Cells
Protein Type:	Recombinant
Biological Activity:	Active
Purification tag / Conjugate:	This Mesothelin protein is labelled with His tag.

Product Details

Characteristics:	Cynomolgus Mesothelin / MSLN (296-580) Protein, His Tag (MALS verified)
Purity:	>95 % as determined by SDS-PAGE.
Endotoxin Level:	Less than 1.0 EU per µg by the LAL method.

Target Details

Target:	Mesothelin (MSLN)
Alternative Name:	Mesothelin (MSLN Products)
Background:	Mesothelin (MSLN) is also known as CAK1 antigen, Pre-pro-megakaryocyte-potentiating factor, which belongs to the mesothelin family. Mesothelin / MSLN can be proteolytically cleaved into the following two chains by a furin-like convertase: Megakaryocyte-potentiating factor (MPF) and the cleaved form of mesothelin. Both MPF and the cleaved form of mesothelin are N-

Target Details

glycosylated. Mesothelin / MSLN can interact with MUC16. The membrane-anchored forms of MSLN may play a role in cellular adhesion. MPF potentiates megakaryocyte colony formation in vitro.

Molecular Weight: 33.7 kDa

Pathways: [EGFR Signaling Pathway](#), [Positive Regulation of Peptide Hormone Secretion](#), [Intracellular Steroid Hormone Receptor Signaling Pathway](#), [Steroid Hormone Mediated Signaling Pathway](#), [Carbohydrate Homeostasis](#), [cAMP Metabolic Process](#), [Regulation of G-Protein Coupled Receptor Protein Signaling](#), [Positive Regulation of Endopeptidase Activity](#), [Regulation of Carbohydrate Metabolic Process](#)

Application Details

Application Notes: MALS verified

Restrictions: For Research Use only

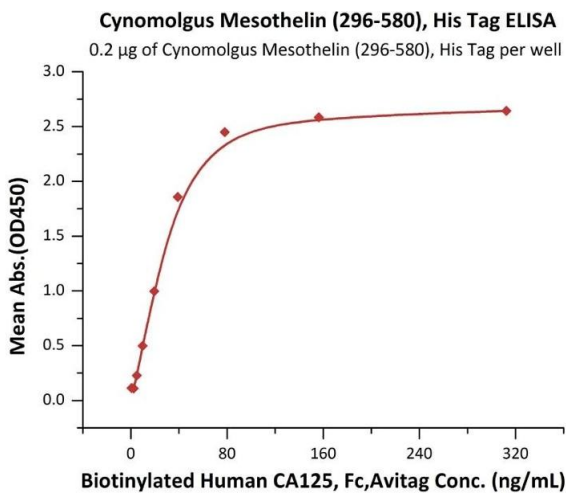
Handling

Format: Lyophilized

Buffer: PBS, pH 7.4

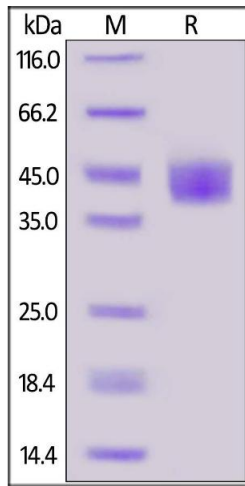
Storage: -20 °C

Images



ELISA

Image 1. Immobilized Cynomolgus Mesothelin (296-580), His Tag (ABIN6973155) at 2 µg/mL (100 µL/well) can bind Biotinylated Human CA125, Fc,Avitag (ABIN5954926, ABIN6253567) with a linear range of 2-39 ng/mL (Routinely tested).

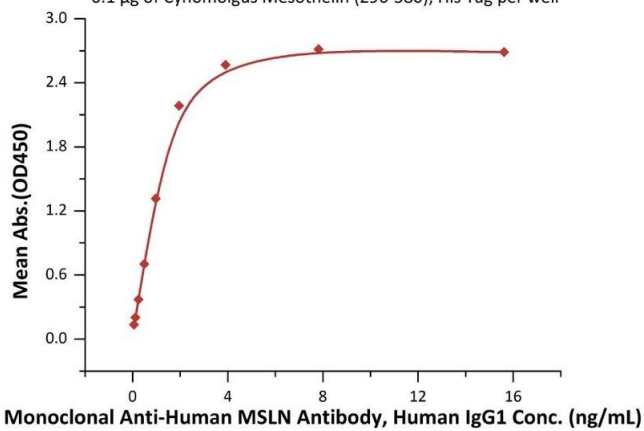


SDS-PAGE

Image 2. Cynomolgus Mesothelin (296-580), His Tag on under reducing (R) condition. The gel was stained overnight with Coomassie Blue. The purity of the protein is greater than 95 % .

Cynomolgus Mesothelin (296-580), His Tag ELISA

0.1 µg of Cynomolgus Mesothelin (296-580), His Tag per well



ELISA

Image 3. Immobilized Cynomolgus Mesothelin (296-580), His Tag (ABIN6973155) at 1 µg/mL (100 µL/well) can bind Monoclonal A MSLN Antibody, Human IgG1 with a linear range of 0.06-2 ng/mL (QC tested).