

Datasheet for ABIN7013469  
**FAP Protein (AA 26-760) (Fc Tag)**[Go to Product page](#)

## 3 Images

## Overview

Quantity:	100 µg
Target:	FAP
Protein Characteristics:	AA 26-760
Origin:	Human
Source:	HEK-293 Cells
Protein Type:	Recombinant
Biological Activity:	Active
Purification tag / Conjugate:	This FAP protein is labelled with Fc Tag.

## Product Details

Characteristics:	Human FAP Protein, Fc Tag (active enzyme)
Purity:	>90 % as determined by SDS-PAGE.
Endotoxin Level:	Less than 1.0 EU per µg by the LAL method.

## Target Details

Target:	FAP
Alternative Name:	FAP ( <a href="#">FAP Products</a> )
Background:	FAP (also known as seprase) is a Type II transmembrane serine protease. Both plasma membrane and soluble forms exhibit post-proline cleaving endopeptidase activity, with a marked preference for Ala/Ser-Gly-Pro-Ser/Asn/Ala consensus sequences. Degrade also gelatin, heat-denatured type I collagen. Also has dipeptidyl peptidase activity, with a preference

Target Details

for Ala-Pro, Ile-Pro, Gly-Pro, Arg-Pro and Pro-Pro. The plasma membrane form, in association with either DPP4, PLAUR or integrins, is involved in the pericellular proteolysis of the extracellular matrix (ECM), and hence promotes cell adhesion, migration and invasion through the ECM. Promotes glioma cell invasion through the brain parenchyma by degrading the proteoglycan brevican. Acts as a tumor suppressor in melanocytic cells through regulation of cell proliferation and survival in a serine protease activity-independent manner.

Molecular Weight:	111.5 kDa
Pathways:	<a href="#">Tube Formation</a>

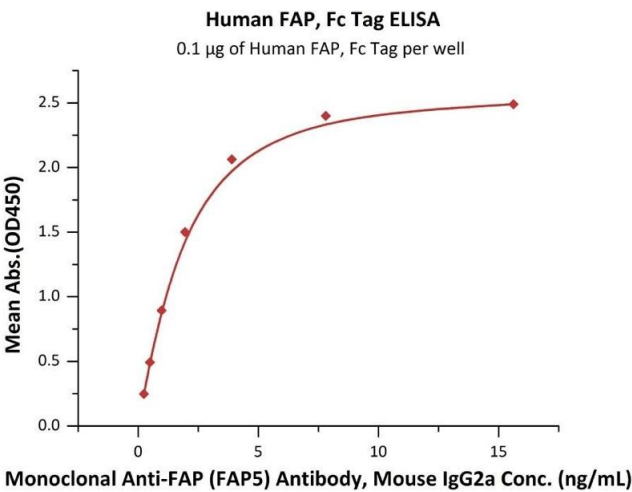
Application Details

Restrictions:	For Research Use only
---------------	-----------------------

Handling

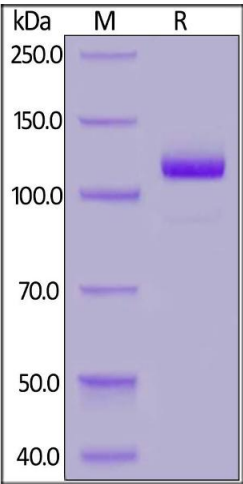
Format:	Lyophilized
Buffer:	PBS, pH 7.4
Storage:	-20 °C

Images



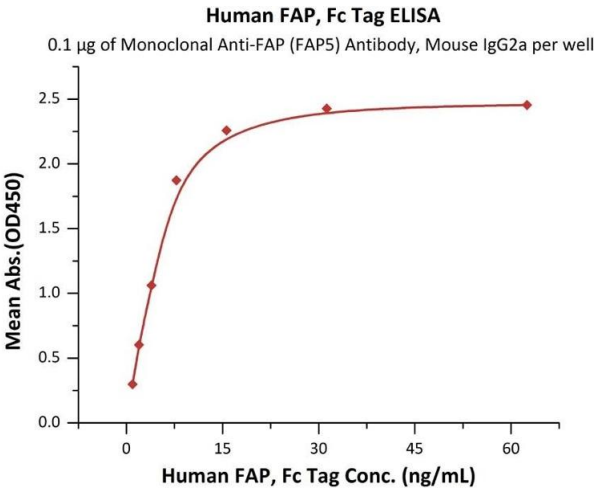
ELISA

**Image 1.** Immobilized Human FAP, Fc Tag (ABIN6973051) at 1 µg/mL (100 µL/well) can bind Monoclonal Anti-FAP (FAP5) Antibody, Mouse IgG2a with a linear range of 0.2-2 ng/mL (QC tested).



SDS-PAGE

**Image 2.** Human FAP, Fc Tag on under reducing (R) condition. The gel was stained overnight with Coomassie Blue. The purity of the protein is greater than 90 % .



ELISA

**Image 3.** Immobilized Monoclonal Anti-FAP (FAP5) Antibody, Mouse IgG2a at 1 µg/mL (100 µL/well) can bind Human FAP, Fc Tag (ABIN6973051) with a linear range of 1-8 ng/mL (Routinely tested).