

Datasheet for ABIN7013472

GUCY2C Protein (AA 24-430) (His tag)**3** Images[Go to Product page](#)

Overview

Quantity:	100 µg
Target:	GUCY2C
Protein Characteristics:	AA 24-430
Origin:	Cynomolgus
Source:	HEK-293 Cells
Protein Type:	Recombinant
Biological Activity:	Active
Purification tag / Conjugate:	This GUCY2C protein is labelled with His tag.

Product Details

Characteristics:	Cynomolgus GUCY2C / Guanylyl cyclase C Protein, His Tag
Purity:	>90 % as determined by SDS-PAGE.
Endotoxin Level:	Less than 1.0 EU per µg by the LAL method.

Target Details

Target:	GUCY2C
Alternative Name:	GUCY2C (GUCY2C Products)
Background:	<p>GUCY2C (Guanylyl Cyclase C), also known as heat-stable enterotoxin receptor, is a type I transmembrane protein of the guanylate cyclase (gc) family that signal by producing cGMP.</p> <p>Guanylate cyclase C (GUCY2C) and its hormones guanylin and uroguanylin have recently emerged as one paracrine axis defending intestinal mucosal integrity against mutational,</p>

Target Details

chemical, and inflammatory injury. GUCY2C murine CAR-T cells recognized and killed human colorectal cancer cells endogenously expressing GUCY2C. Thus, we have identified a human GUCY2C-specific CAR-T cell therapy approach that may be developed for the treatment of GUCY2C-expressing metastatic colorectal cancer.

Molecular Weight:	48.0 kDa
NCBI Accession:	XP_005570270

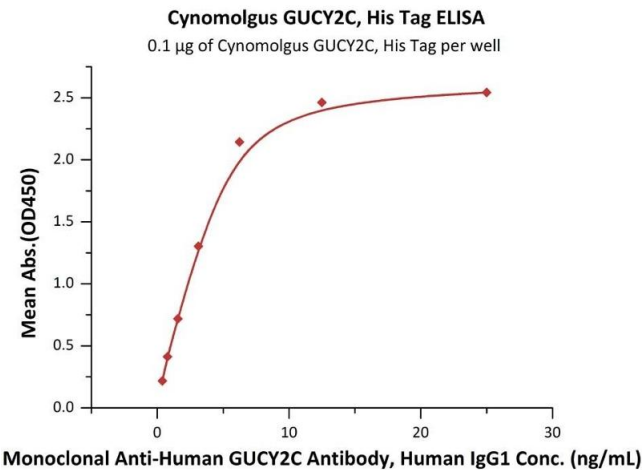
Application Details

Restrictions:	For Research Use only
---------------	-----------------------

Handling

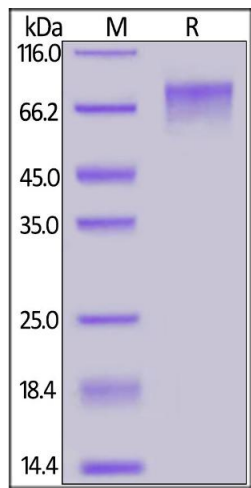
Format:	Lyophilized
Buffer:	PBS, pH 7.4
Storage:	-20 °C

Images



ELISA

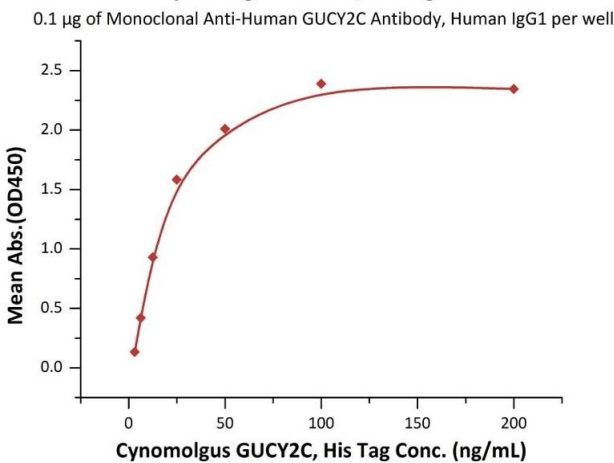
Image 1. Immobilized Cynomolgus GUCY2C, His Tag (ABIN6973082) at 1 µg/mL (100 µL/well) can bind Monoclonal A GUCY2C Antibody, Human IgG1 with a linear range of 0.3-6 ng/mL (QC tested).



SDS-PAGE

Image 2. Cynomolgus GUCY2C, His Tag on under reducing (R) condition. The gel was stained overnight with Coomassie Blue. The purity of the protein is greater than 90 % .

Cynomolgus GUCY2C, His Tag ELISA



ELISA

Image 3. Immobilized Monoclonal A GUCY2C Antibody, Human IgG1 at 1 µg/mL (100 µL/well) can bind Cynomolgus GUCY2C, His Tag (ABIN6973082) with a linear range of 3-25 ng/mL (Routinely tested).