

Datasheet for ABIN7013491
MICA Protein (AA 24-308) (Fc Tag)

3 Images

[Go to Product page](#)

Overview

Quantity:	100 µg
Target:	MICA
Protein Characteristics:	AA 24-308
Origin:	Human
Source:	HEK-293 Cells
Protein Type:	Recombinant
Biological Activity:	Active
Purification tag / Conjugate:	This MICA protein is labelled with Fc Tag.

Product Details

Characteristics:	Human MICA Protein, Fc Tag (MALS verified)
Purity:	>95 % as determined by SDS-PAGE.
Endotoxin Level:	Less than 1.0 EU per µg by the LAL method.

Target Details

Target:	MICA
Alternative Name:	MICA (MICA Products)
Background:	MHC class I polypeptide-related sequence A (MICA) belongs to the MHC class I family and MICA subfamily. MICA contains one Ig-like C1-type (immunoglobulin-like) domain. Unlike classical MHC class I molecules, MICA does not form a heterodimer with beta-2-microglobulin. MICA acts as a stress-induced self-antigen that is recognized by gamma delta T-cells. MICA is ligand

Target Details

	for the KLRK1/NKG2D receptor. MICA bind to KLRK1 leads to cell lysis.
Molecular Weight:	59.3 kDa
Pathways:	Activation of Innate immune Response , Transition Metal Ion Homeostasis , Human Leukocyte Antigen (HLA) in Adaptive Immune Response

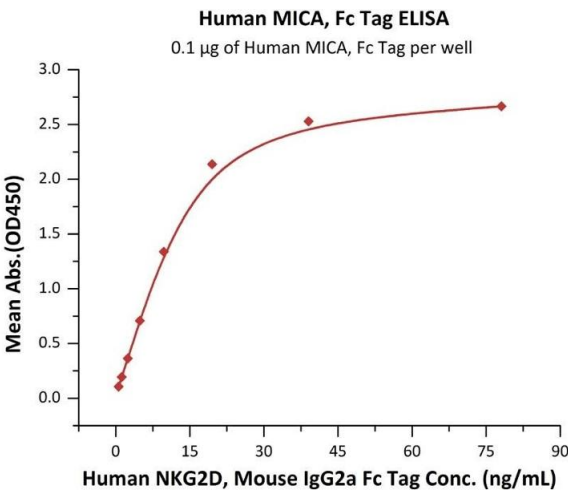
Application Details

Application Notes:	MALS verified
Restrictions:	For Research Use only

Handling

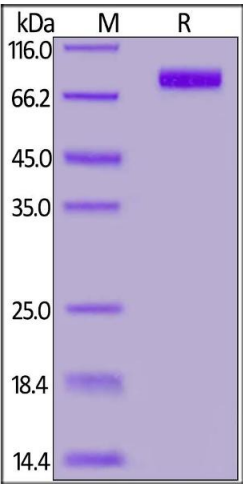
Format:	Lyophilized
Buffer:	PBS, pH 7.4
Storage:	-20 °C

Images



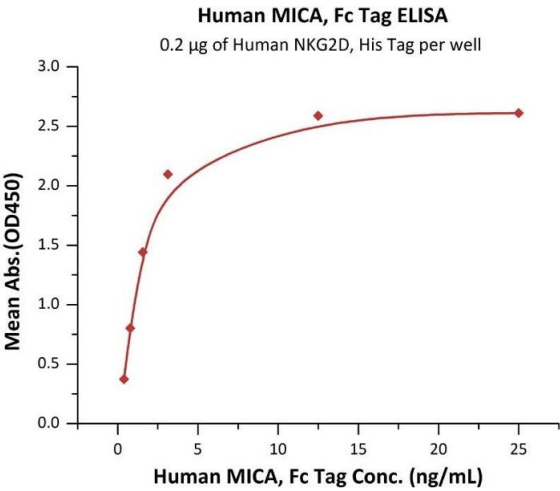
ELISA

Image 1. Immobilized Human MICA, Fc Tag (ABIN6973157) at 1 µg/mL (100 µL/well) can bind Human NKG2D, Mouse IgG2a Fc Tag (ABIN6973178) with a linear range of 0.6-20 ng/mL (Routinely tested).



SDS-PAGE

Image 2. Human MICA, Fc Tag (MALS verified) on under reducing (R) condition. The gel was stained overnight with Coomassie Blue. The purity of the protein is greater than 95 % .



ELISA

Image 3. Immobilized Human NKG2D, His Tag (ABIN6973179) at 2 µg/mL (100 µL/well) can bind Human MICA, Fc Tag (ABIN6973157) with a linear range of 0.5-2 ng/mL (QC tested).