



[Go to Product page](#)

Datasheet for ABIN7013495

Sialoadhesin/CD169 Protein (AA 20-1641) (His tag)

1 Image

Overview

Quantity:	100 µg
Target:	Sialoadhesin/CD169 (SIGLEC1)
Protein Characteristics:	AA 20-1641
Origin:	Human
Source:	HEK-293 Cells
Protein Type:	Recombinant
Purification tag / Conjugate:	This Sialoadhesin/CD169 protein is labelled with His tag.

Product Details

Sequence:	AA 20-1641
Characteristics:	Cynomolgus Siglec-10 Protein, His Tag
Purity:	>95 % as determined by SDS-PAGE.
Endotoxin Level:	Less than 1.0 EU per µg by the LAL method.

Target Details

Target:	Sialoadhesin/CD169 (SIGLEC1)
Alternative Name:	Siglec-1 (SIGLEC1 Products)
Background:	Alternate names for sialoadhesin include siglec-1 and CD169 (cluster of differentiation 169). Since sialoadhesin binds sialic acids with its N-terminal IgV-domain, it is also a member of the SIGLEC family. It is defined as an I-type lectin, since it contains 17 immunoglobulin (Ig) domains (one variable domain and 16 constant domains), and thus also belongs to the immunoglobulin

Target Details

superfamily (IgSF). Since sialoadhesin binds sialic acids with its N-terminal IgV-domain, it is also a member of the SIGLEC family. Acts as an endocytic receptor mediating clathrin dependent endocytosis. Macrophage-restricted adhesion molecule that mediates sialic-acid dependent binding to lymphocytes, including granulocytes, monocytes, natural killer cells, B-cells and CD8 T-cells. Preferentially binds to alpha-2,3-linked sialic acid. Binds to SPN/CD43 on T-cells.

Molecular Weight: 175.1 kDa

Application Details

Restrictions: For Research Use only

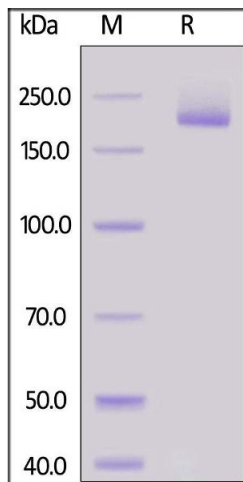
Handling

Format: Lyophilized

Buffer: MES,NaCl, pH 7.5

Storage: -20 °C

Images



SDS-PAGE

Image 1. Human Siglec-1, His Tag on under reducing (R) condition. The gel was stained overnight with Coomassie Blue. The purity of the protein is greater than 95 % .