

Datasheet for ABIN7013531

**FZD10 Protein (AA 21-161) (His tag)**[Go to Product page](#)**1** Image

## Overview

Quantity:	100 µg
Target:	FZD10
Protein Characteristics:	AA 21-161
Origin:	Human
Source:	HEK-293 Cells
Protein Type:	Recombinant
Purification tag / Conjugate:	This FZD10 protein is labelled with His tag.

## Product Details

Characteristics:	Human Frizzled-10 / FZD10 Protein, His Tag (MALS verified)
Purity:	>90 % as determined by SDS-PAGE.
Endotoxin Level:	Less than 1.0 EU per µg by the LAL method.

## Target Details

Target:	FZD10
Alternative Name:	Frizzled-10 ( <a href="#">FZD10 Products</a> )
Background:	Frizzled-10 (FZD10) is also known as FzE7 or CD350, which belongs to the G-protein coupled receptor Fz/Smo family. Most of frizzled receptors are coupled to the beta-catenin canonical signaling pathway, which leads to the activation of disheveled proteins, inhibition of GSK-3 kinase, nuclear accumulation of beta-catenin and activation of Wnt target genes. FZD10 contains one FZ (frizzled) domain. FZD10 protein is a cell surface receptor, which is activated

Target Details

	by Wnt proteins and involved in the regulation of cellular function. FZD10 interacts with WNT7B and MYOC.
Molecular Weight:	18.0 kDa
NCBI Accession:	<a href="#">NP_009128</a>
Pathways:	<a href="#">WNT Signaling</a>

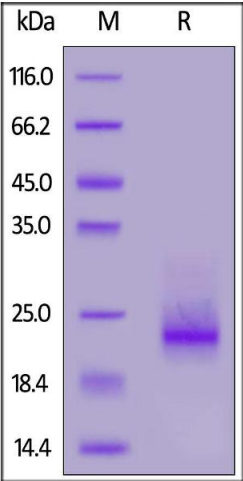
Application Details

Application Notes:	MALS verified
Restrictions:	For Research Use only

Handling

Format:	Lyophilized
Buffer:	PBS, pH 7.4
Storage:	-20 °C

Images



**SDS-PAGE**

**Image 1.** Human Frizzled-10, His Tag on under reducing (R) condition. The gel was stained overnight with Coomassie Blue. The purity of the protein is greater than 90 % .