

Datasheet for ABIN7013538

**KLRC2 Protein (AA 94-231) (His tag)**[Go to Product page](#)**1** Image

## Overview

Quantity:	100 µg
Target:	KLRC2
Protein Characteristics:	AA 94-231
Origin:	Human
Source:	HEK-293 Cells
Protein Type:	Recombinant
Purification tag / Conjugate:	This KLRC2 protein is labelled with His tag.

## Product Details

Characteristics:	Human NKG2C / CD159c Protein, His Tag
Purity:	>90 % as determined by SDS-PAGE.
Endotoxin Level:	Less than 1.0 EU per µg by the LAL method.

## Target Details

Target:	KLRC2
Alternative Name:	NKG2C ( <a href="#">KLRC2 Products</a> )
Background:	Human NKG2C (NK cell Group 2 isoform C, Killer cell lectin-like receptor subfamily C, member 2) is a member of the C-type lectin-like superfamily of proteins. NKG2C plays a role as a receptor for the recognition of MHC class I HLA-E molecules by NK cells and some cytotoxic T-cells. The CD94/NKG2C killer lectin-like receptor (KLR) specific for HLA-E is coupled to the KARAP/DAP12 adapter in a subset of NK cells, triggering their effector functions. CD94/NKG2C

## Target Details

may operate as an alternative activation pathway for a subset of CD8+ T lymphocytes, triggering their effector functions and proliferation upon specific ligand engagement.

Molecular Weight: 17.8 kDa

## Application Details

Restrictions: For Research Use only

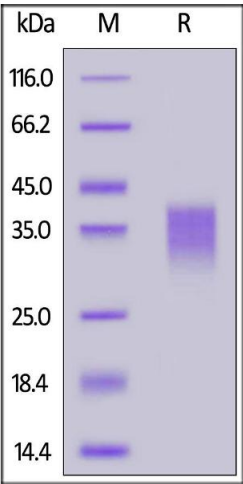
## Handling

Format: Lyophilized

Buffer: PBS, pH 7.4

Storage: -20 °C

## Images



### SDS-PAGE

**Image 1.** Human NKG2C, His Tag on under reducing (R) condition. The gel was stained overnight with Coomassie Blue. The purity of the protein is greater than 90 % .