

Datasheet for ABIN7013558

Syndecan 1 Protein (SDC1) (AA 23-254) (Fc Tag)[Go to Product page](#)**3** Images

Overview

Quantity:	100 µg
Target:	Syndecan 1 (SDC1)
Protein Characteristics:	AA 23-254
Origin:	Human
Source:	HEK-293 Cells
Protein Type:	Recombinant
Biological Activity:	Active
Purification tag / Conjugate:	This Syndecan 1 protein is labelled with Fc Tag.

Product Details

Sequence:	AA 23-254
Characteristics:	Biotinylated Human Syndecan-1 Protein, Fc,Avitag™
Purity:	>95 % as determined by SDS-PAGE.
Endotoxin Level:	Less than 1.0 EU per µg by the LAL method.

Target Details

Target:	Syndecan 1 (SDC1)
Alternative Name:	Syndecan-1 (SDC1 Products)
Background:	Neuronal protein that plays several roles in synaptic activity such as regulation of synaptic vesicle trafficking and subsequent neurotransmitter release. Participates as a monomer in

Target Details

synaptic vesicle exocytosis by enhancing vesicle priming, fusion and dilation of exocytotic fusion pores. Mechanistically, acts by increasing local Ca²⁺ release from microdomains which is essential for the enhancement of ATP-induced exocytosis. Acts also as a molecular chaperone in its multimeric membrane-bound state, assisting in the folding of synaptic fusion components called SNAREs (Soluble NSF Attachment Protein REceptors) at presynaptic plasma membrane in conjunction with cysteine string protein-alpha/DNAJC5. This chaperone activity is important to sustain normal SNARE-complex assembly during aging. Plays also a role in the regulation of the dopamine neurotransmission by associating with the dopamine transporter (DAT1) and thereby modulating its activity.

Molecular Weight:	50.3 kDa
Pathways:	Glycosaminoglycan Metabolic Process , Regulation of Muscle Cell Differentiation , Skeletal Muscle Fiber Development , Lipid Metabolism

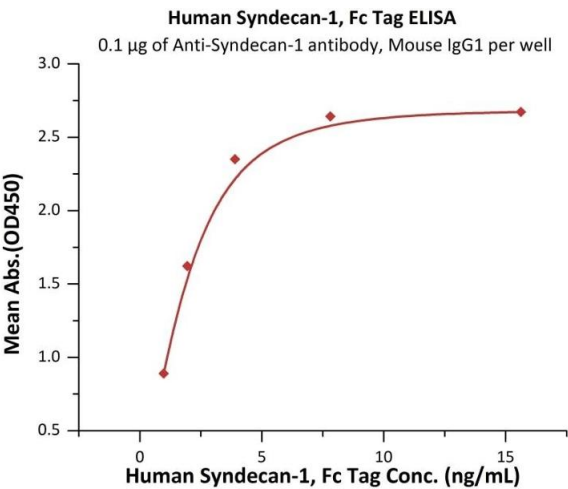
Application Details

Restrictions:	For Research Use only
---------------	-----------------------

Handling

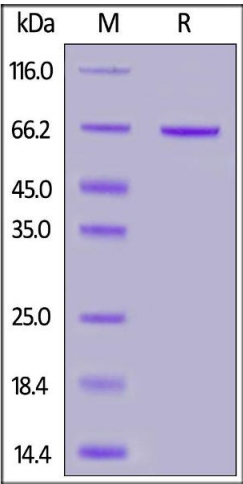
Format:	Lyophilized
Buffer:	PBS, pH 7.4
Storage:	-20 °C

Images



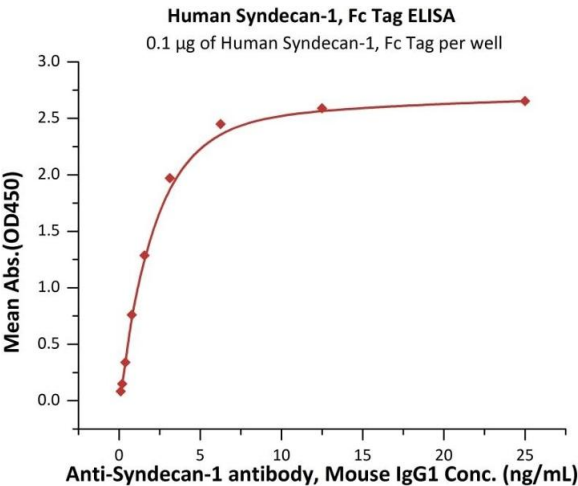
ELISA

Image 1. Immobilized Acan-1 antibody, Mouse IgG1 at 1 µg/mL (100 µL/well) can bind Human Syndecan-1, Fc Tag (ABIN6973273) with a linear range of 1-2 ng/mL (Routinely tested).



SDS-PAGE

Image 2. Human Syndecan-1, Fc Tag on under reducing (R) condition. The gel was stained overnight with Coomassie Blue. The purity of the protein is greater than 95 % .



ELISA

Image 3. Immobilized Human Syndecan-1, Fc Tag (ABIN6973273) at 1 µg/mL (100 µL/well) can bind Acan-1 antibody, Mouse IgG1 with a linear range of 0.1-3 ng/mL (QC tested).