

Datasheet for ABIN7013566

**TREM2 Protein (AA 19-171) (His tag)**[Go to Product page](#)**2** Images

## Overview

Quantity:	100 µg
Target:	TREM2
Protein Characteristics:	AA 19-171
Origin:	Mouse
Source:	HEK-293 Cells
Protein Type:	Recombinant
Biological Activity:	Active
Purification tag / Conjugate:	This TREM2 protein is labelled with His tag.

## Product Details

Sequence:	AA 19-171
Characteristics:	Human TREM2 Protein, His Tag
Purity:	>90 % as determined by SDS-PAGE.
Endotoxin Level:	Less than 1.0 EU per µg by the LAL method.

## Target Details

Target:	TREM2
Alternative Name:	TREM2 ( <a href="#">TREM2 Products</a> )
Background:	Triggering receptor expressed on myeloid cells 2 (TREM2) is a cell surface receptor of the immunoglobulin superfamily. The TREM2 is found in various tissue macrophages, such as CNS

## Target Details

microglia, bone osteoclasts, alveolar, peritoneal and intestinal macrophages. TREM2 is also present on cultured bone marrow-derived macrophages and monocyte-derived dendritic cells. Some research have identified a rare variant of TREM2 that is a risk factor for Alzheimer disease (AD), which is the most common form of late-onset dementia. The extracellular region of TREM2 contains a single immunoglobulin superfamily domain and binds polyanionic ligands, such as bacterial lipopolysaccharide (LPS) and phospholipids<sup>8</sup>. Upon ligand binding, TREM2 transmits intracellular signals through an adaptor, DAP12 (also known as TYRO protein tyrosine kinase-binding protein (TYROBP)), which is associated with the transmembrane region of TREM2 and which recruits the protein tyrosine kinase SYK through its cytosolic immunoreceptor tyrosine-based activation motifs (ITAMs). TREM2 is a pro-tumorigenic marker of tumor-infiltrating macrophages in mouse models and human tumors that can be targeted to curb tumor growth and improve the efficacy of checkpoint blockade therapy while remodeling the landscape of tumor-infiltrating macrophages.

Molecular Weight: 18.7 kDa

## Application Details

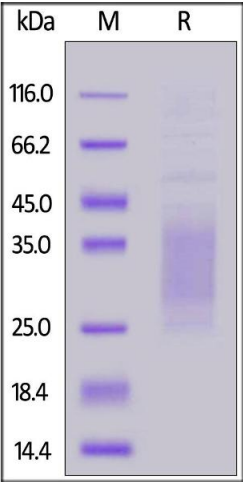
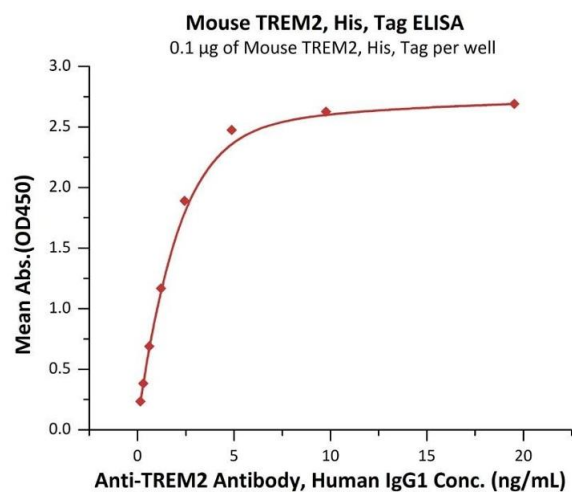
Restrictions: For Research Use only

## Handling

Format: Lyophilized

Buffer: PBS, pH 7.4

Storage: -20 °C



**ELISA**

**Image 1.** Immobilized Mouse TREM2, His, Tag (ABIN6973293) at 1 µg/mL (100 µL/well) can bind A Antibody, Human IgG1 with a linear range of 0.2-2 ng/mL (QC tested).

**SDS-PAGE**

**Image 2.** Mouse TREM2, His, Tag on under reducing (R) condition. The gel was stained overnight with Coomassie Blue. The purity of the protein is greater than 90 % .