

Datasheet for ABIN7013569

**NOTCH2 Protein (AA 26-530) (Fc Tag)****3** Images[Go to Product page](#)

## Overview

Quantity:	100 µg
Target:	NOTCH2
Protein Characteristics:	AA 26-530
Origin:	Human
Source:	HEK-293 Cells
Protein Type:	Recombinant
Biological Activity:	Active
Purification tag / Conjugate:	This NOTCH2 protein is labelled with Fc Tag.

## Product Details

Characteristics:	Human NOTCH2 Protein, Fc Tag (MALS verified)
Purity:	>95 % as determined by SDS-PAGE.
Endotoxin Level:	Less than 1.0 EU per µg by the LAL method.

## Target Details

Target:	NOTCH2
Alternative Name:	NOTCH2 ( <a href="#">NOTCH2 Products</a> )
Background:	Functions as a receptor for membrane-bound ligands Jagged-1 (JAG1), Jagged-2 (JAG2) and Delta-1 (DLL1) to regulate cell-fate determination. Upon ligand activation through the released notch intracellular domain (NICD) it forms a transcriptional activator complex with RBPJ/RBPSUH and activates genes of the enhancer of split locus . Affects the implementation

## Target Details

of differentiation, proliferation and apoptotic programs (By similarity). Involved in bone remodeling and homeostasis. In collaboration with RELA/p65 enhances NFATc1 promoter activity and positively regulates RANKL-induced osteoclast differentiation . Positively regulates self-renewal of liver cancer cells .

Molecular Weight: 80.5 kDa

Pathways: [Notch Signaling](#), [Stem Cell Maintenance](#)

## Application Details

Application Notes: MALS verified

Restrictions: For Research Use only

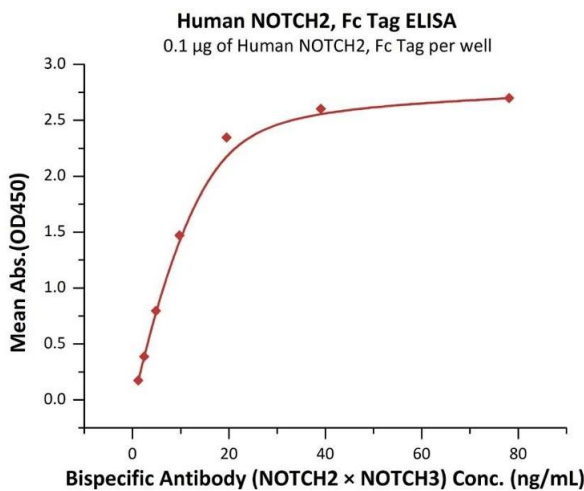
## Handling

Format: Lyophilized

Buffer: PBS, pH 7.4

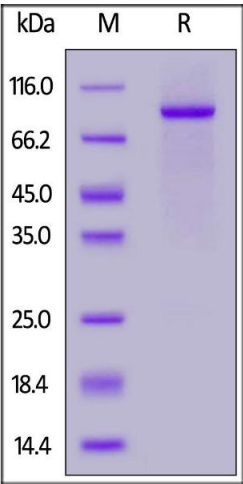
Storage: -20 °C

## Images



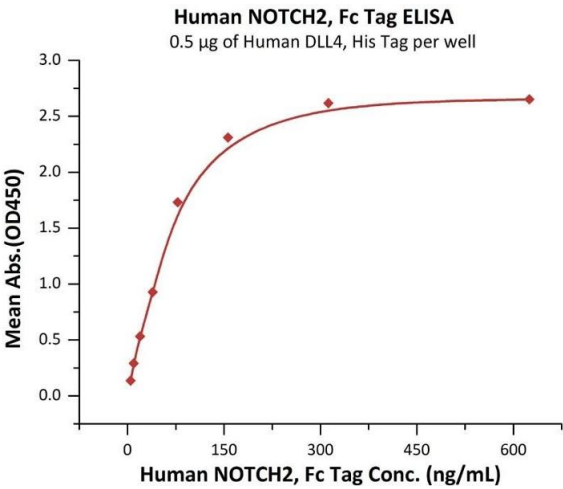
### ELISA

**Image 1.** Immobilized Human NOTCH2, Fc Tag (ABIN6973184) at 1 µg/mL (100 µL/well) can bind Bispecific Antibody (NOTCH2 x NOTCH3) with a linear range of 1-20 ng/mL (Routinely tested).



SDS-PAGE

**Image 2.** Human NOTCH2, Fc Tag on under reducing (R) condition. The gel was stained overnight with Coomassie Blue. The purity of the protein is greater than 95 % .



ELISA

**Image 3.** Immobilized Human DLL4, His Tag (ABIN2180972,ABIN2180971) at 5 µg/mL (100 µL/well) can bind Human NOTCH2, Fc Tag (ABIN6973184) with a linear range of 5-78 ng/mL (QC tested).