

Datasheet for ABIN7013576

Notch1 Protein (AA 19-526) (Fc Tag)[Go to Product page](#)**2** Images

Overview

Quantity:	100 µg
Target:	Notch1 (NOTCH1)
Protein Characteristics:	AA 19-526
Origin:	Human
Source:	HEK-293 Cells
Protein Type:	Recombinant
Biological Activity:	Active
Purification tag / Conjugate:	This Notch1 protein is labelled with Fc Tag.

Product Details

Characteristics:	Human NOTCH1 Protein, Fc Tag (MALS verified)
Purity:	>95 % as determined by SDS-PAGE.
Endotoxin Level:	Less than 1.0 EU per µg by the LAL method.

Target Details

Target:	Notch1 (NOTCH1)
Alternative Name:	NOTCH1 (NOTCH1 Products)
Background:	NOTCH1 Interacts with DNER, DTX1, DTX2 and RBPJ/RBPSUH. Also interacts with MAML1, MAML2 and MAML3 which act as transcriptional coactivators for NOTCH1. The NOTCH1 intracellular domain interacts with SNW1, the interaction involves multimerized NOTCH1 NICD and is implicated in a formation of an intermediate preactivation complex which associates

Target Details

with DNA-bound CBF-1/RBPJ. The activated membrane-bound form interacts with AAK1 which promotes NOTCH1 stabilization. Functions as a receptor for membrane-bound ligands Jagged-1 (JAG1), Jagged-2 (JAG2) and Delta-1 (DLL1) to regulate cell-fate determination. Involved in the maturation of both CD4+ and CD8+ cells in the thymus. Important for follicular differentiation and possibly cell fate selection within the follicle. During cerebellar development, functions as a receptor for neuronal DNER and is involved in the differentiation of Bergmann glia.

Molecular Weight:	80.0 kDa
Pathways:	Notch Signaling , Stem Cell Maintenance , Regulation of Muscle Cell Differentiation , Tube Formation , Skeletal Muscle Fiber Development

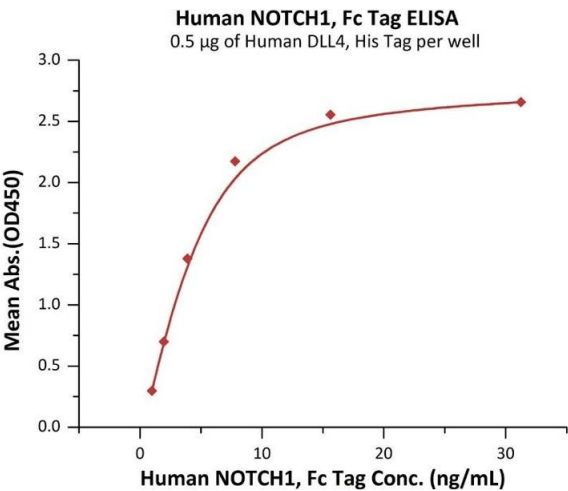
Application Details

Application Notes:	MALS verified
Restrictions:	For Research Use only

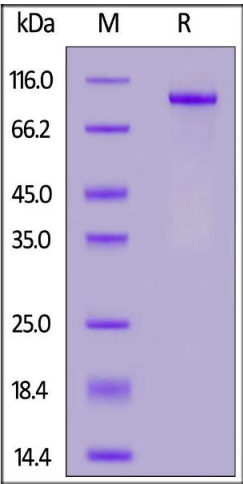
Handling

Format:	Lyophilized
Buffer:	PBS, pH 7.4
Storage:	-20 °C

Images



ELISA	
Image 1.	Immobilized Human DLL4, His Tag (ABIN2180972,ABIN2180971) at 5 µg/mL (100 µL/well) can bind Human NOTCH1, Fc Tag (ABIN6973182) with a linear range of 1-8 ng/mL (QC tested).



SDS-PAGE

Image 2. Human NOTCH1, Fc Tag on under reducing (R) condition. The gel was stained overnight with Coomassie Blue. The purity of the protein is greater than 95 % .