

Datasheet for ABIN7013596

FURIN Protein (AA 27-574) (His tag)[Go to Product page](#)**1** Image

Overview

Quantity:	100 µg
Target:	FURIN
Protein Characteristics:	AA 27-574
Origin:	Human
Source:	HEK-293 Cells
Protein Type:	Recombinant
Purification tag / Conjugate:	This FURIN protein is labelled with His tag.

Product Details

Purpose:	Human Furin / PCSK3 Protein, His Tag
Purity:	>90 % as determined by SDS-PAGE.
Endotoxin Level:	Less than 1.0 EU per µg by the LAL method.

Target Details

Target:	FURIN
Alternative Name:	Furin (FURIN Products)
Background:	Furin is also known as paired basic Amino acid Cleaving Enzyme (PACE), is an enzyme which belongs to the subtilisin-like proprotein convertase family. The members of this family are proprotein convertases that process latent precursor proteins into their biologically active products. Furin is enriched in the Golgi apparatus, where it functions to cleave other proteins into their mature/active forms. The expression of furin in T-cells is required for maintenance of

Target Details

peripheral immune tolerance. Furin cleaves proteins just downstream of a basic amino acid target sequence (canonically, Arg-X-(Arg/Lys) -Arg'). PACE is a calcium-dependent serine endoprotease that can efficiently cleave precursor proteins at their paired basic amino acid processing sites. In addition to processing cellular precursor proteins, furin is also utilized by a number of pathogens. For example, the envelope proteins of viruses such as HIV, influenza and dengue fever viruses must be cleaved by furin or furin-like proteases to become fully functional. PACE also play a role in tumor progression.

Molecular Weight: 62.1 kDa

NCBI Accession: [NM_002569](#)

Pathways: [Notch Signaling](#), [Neurotrophin Signaling Pathway](#)

Application Details

Restrictions: For Research Use only

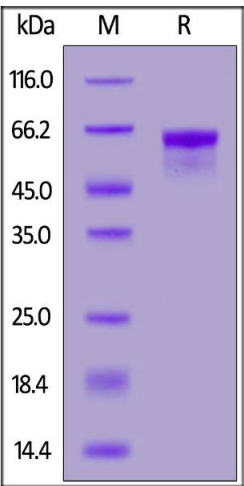
Handling

Format: Liquid

Buffer: 20 mM Tris, 150 mM NaCl, pH 9.0

Storage: -80 °C

Images



SDS-PAGE

Image 1. Human Furin, His Tag on under reducing (R) condition. The gel was stained overnight with Coomassie Blue. The purity of the protein is greater than 90 % .