

Datasheet for ABIN7013599

**Topoisomerase II alpha Protein (AA 1354-1473)**[Go to Product page](#)**1** Image

## Overview

Quantity:	100 µg
Target:	Topoisomerase II alpha (TOP2A)
Protein Characteristics:	AA 1354-1473
Origin:	Human
Source:	Escherichia coli (E. coli)
Protein Type:	Recombinant

## Product Details

Sequence:	AA 1354-1473
Characteristics:	Cynomolgus TRAIL R2 / DR5 / TNFRSF10B Protein, His Tag (MALS verified)
Purity:	>90 % as determined by SDS-PAGE.
Endotoxin Level:	Less than 1.0 EU per µg by the LAL method.

## Target Details

Target:	Topoisomerase II alpha (TOP2A)
Alternative Name:	TOP2A ( <a href="#">TOP2A Products</a> )
Background:	DNA topoisomerase 2-alpha (TOP2A) is also known as DNA topoisomerase II, alpha isozyme and TOP2. It is a topoisomerase which control of topological states of DNA by transient breakage and subsequent rejoining of DNA strands. Topoisomerase II makes double-strand breaks. Essential during mitosis and meiosis for proper segregation of daughter chromosomes. May play a role in regulating the period length of ARNTL/BMAL1 transcriptional oscillation. Also

## Target Details

	it is the targets of anti-cancer drugs that cause treatment-related leukemias with balanced translocations.
Molecular Weight:	12.8 kDa
NCBI Accession:	<a href="#">NP_001058</a>
Pathways:	<a href="#">Cell Division Cycle</a> , <a href="#">Mitotic G1-G1/S Phases</a>

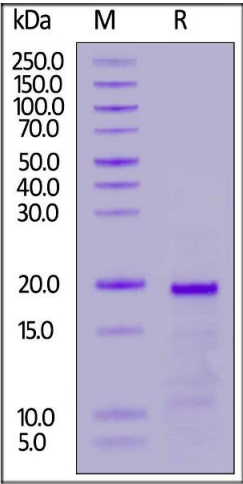
## Application Details

Restrictions:	For Research Use only
---------------	-----------------------

## Handling

Format:	Liquid
Buffer:	50 mM Tris, 0.5 M KCl, pH 8.0
Storage:	-80 °C

## Images



### SDS-PAGE

**Image 1.** Human TOP2A, Tag Free on under reducing (R) condition. The gel was stained overnight with Coomassie Blue. The purity of the protein is greater than 90 % .