

Datasheet for ABIN7013652

TACSTD2 Protein (AA 31-274) (His tag)[Go to Product page](#)**2** Images

Overview

Quantity:	100 µg
Target:	TACSTD2
Protein Characteristics:	AA 31-274
Origin:	Rhesus Monkey, Cynomolgus
Source:	HEK-293 Cells
Protein Type:	Recombinant
Purification tag / Conjugate:	This TACSTD2 protein is labelled with His tag.

Product Details

Sequence:	AA 31-274
Characteristics:	Mouse TROP-2 / TACSTD2 Protein, His Tag
Purity:	>95 % as determined by SDS-PAGE.
Endotoxin Level:	Less than 1.0 EU per µg by the LAL method.

Target Details

Target:	TACSTD2
Alternative Name:	TROP-2 (TACSTD2 Products)
Background:	TROP-2 is a single-copy gene in human cells, and encodes a type-1 transmembrane glycoprotein which is over-expressed in various malignancies, also referred to as tumor associated calcium signal transducer 2 (TACSTD2), GA733-1 or M1S1. TROP-2 is related to epithelial cell adhesion molecule (EpCAM), also called TROP-1, gp40, and KSA. Trop-1 and Trop-

Target Details

2 are homologous to serum IGF-II-binding proteins and appear as signal transducers. Thus, they likely represent novel cell-surface receptors and may play a role in regulating the growth of carcinoma cells.

Molecular Weight: 29.4 kDa

NCBI Accession: [XP_001114599](#)

Application Details

Application Notes: MALS verified

Restrictions: For Research Use only

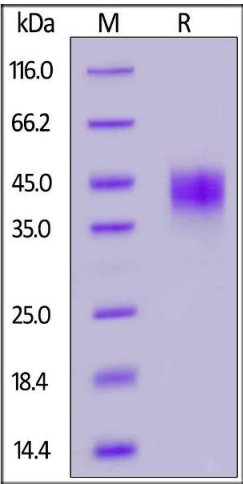
Handling

Format: Lyophilized

Buffer: PBS, pH 7.4

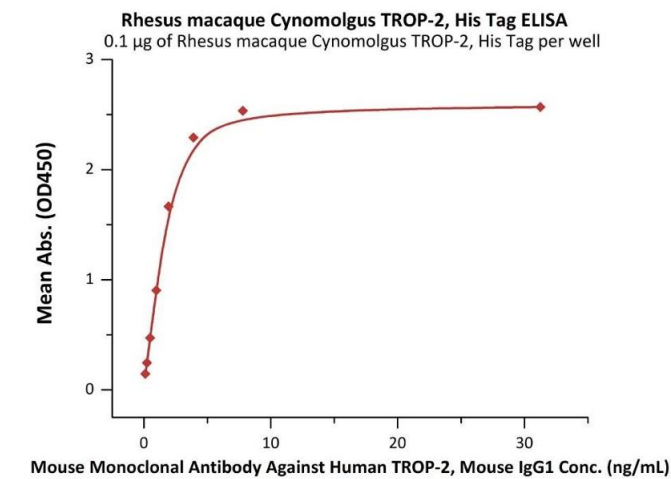
Storage: -20 °C

Images



SDS-PAGE

Image 1. Rhesus macaque / Cynomolgus TROP-2, His Tag on under reducing (R) condition. The gel was stained overnight with Coomassie Blue. The purity of the protein is greater than 90 % .



ELISA

Image 2. Immobilized Rhesus macaque / Cynomolgus TROP-2, His Tag (ABIN6973296) at 1 µg/mL (100 µL/well) can bind Mouse Monoclonal Antibody Against Human TROP-2, Mouse IgG1 with a linear range of 0.1-2 ng/mL (QC tested).