

Datasheet for ABIN7013682

ErbB2/Her2 Protein (AA 23-510) (His tag)**3** Images[Go to Product page](#)

Overview

Quantity:	100 µg
Target:	ErbB2/Her2
Protein Characteristics:	AA 23-510
Origin:	Human
Source:	HEK-293 Cells
Protein Type:	Recombinant
Biological Activity:	Active
Purification tag / Conjugate:	This ErbB2/Her2 protein is labelled with His tag.

Product Details

Characteristics:	Human Her2 / ErbB2 (23-510) Protein, His Tag (MALS verified)
Purity:	>95 % as determined by SDS-PAGE.
Endotoxin Level:	Less than 1.0 EU per µg by the LAL method.

Target Details

Target:	ErbB2/Her2
Alternative Name:	Her2 (ErbB2/Her2 Products)
Background:	Human Epidermal growth factor Receptor 2 (HER2) is also called ERBB2, HER-2,HER-2 /neu, NEU, NGL,TKR1 and c-erb B2,and is a protein giving higher aggressiveness in breast cancers. It is a member of the ErbB protein family, more commonly known as the epidermal growth factor receptor family. HER2 is a cell membrane surface-bound receptor tyrosine kinase and is

Target Details

normally involved in the signal transduction pathways leading to cell growth and differentiation. HER2 is thought to be an orphan receptor, with none of the EGF family of ligands able to activate it. Approximately 30 % of breast cancers have an amplification of the HER2 gene or overexpression of its protein product. Overexpression of this receptor in breast cancer is associated with increased disease recurrence and worse prognosis. HER2 appears to play roles in development, cancer, communication at the neuromuscular junction and regulation of cell growth and differentiation .

Molecular Weight:	55.6 kDa
NCBI Accession:	NP_004439
Pathways:	RTK Signaling , Fc-epsilon Receptor Signaling Pathway , EGFR Signaling Pathway , Neurotrophin Signaling Pathway , Skeletal Muscle Fiber Development

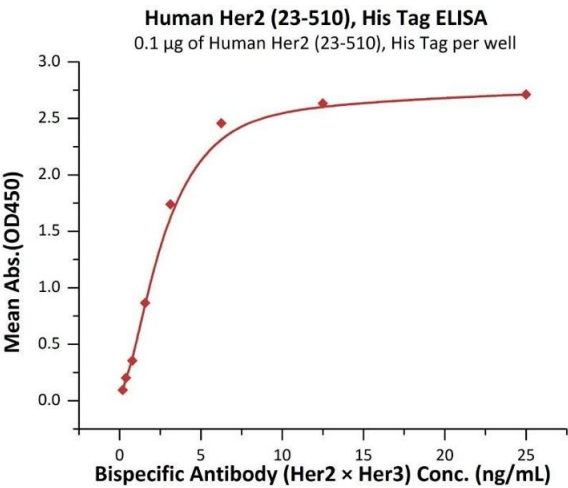
Application Details

Application Notes:	MALS verified
Restrictions:	For Research Use only

Handling

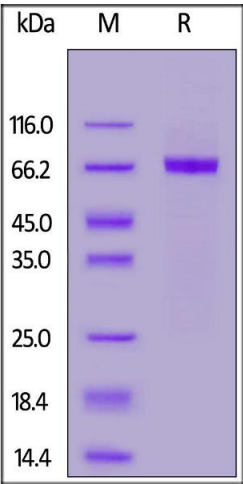
Format:	Lyophilized
Buffer:	PBS, pH 7.4
Storage:	-20 °C

Images



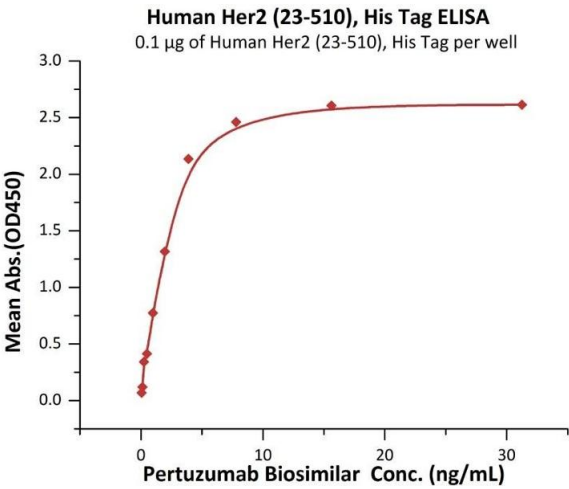
ELISA

Image 1. Immobilized Human Her2 (23-510), His Tag (ABIN6973091) at 1 µg/mL (100 µL/well) can bind Bispecific Antibody (Her2 x Her3) with a linear range of 0.2-3 ng/mL (Routinely tested).



SDS-PAGE

Image 2. Human Her2 (23-510), His Tag on under reducing (R) condition. The gel was stained overnight with Coomassie Blue. The purity of the protein is greater than 95 % .



ELISA

Image 3. Immobilized Human Her2 (23-510), His Tag (ABIN6973091) at 1 µg/mL (100 µL/well) can bind Pertuzumab Biosimilar with a linear range of 0.1-4 ng/mL (QC tested).