

Datasheet for ABIN7013683

TREM2 Protein (AA 19-174) (Fc Tag)[Go to Product page](#)**2** Images

Overview

Quantity:	100 µg
Target:	TREM2
Protein Characteristics:	AA 19-174
Origin:	Human
Source:	HEK-293 Cells
Protein Type:	Recombinant
Biological Activity:	Active
Purification tag / Conjugate:	This TREM2 protein is labelled with Fc Tag.

Product Details

Sequence:	AA 19-174
Characteristics:	Cynomolgus TREM2 Protein, His Tag
Purity:	>95 % as determined by SDS-PAGE.
Endotoxin Level:	Less than 1.0 EU per µg by the LAL method.

Target Details

Target:	TREM2
Alternative Name:	TREM2 (TREM2 Products)
Background:	Triggering receptor expressed on myeloid cells 2 (TREM2) is a cell surface receptor of the immunoglobulin superfamily. The TREM2 is found in various tissue macrophages, such as CNS

Target Details

microglia, bone osteoclasts, alveolar, peritoneal and intestinal macrophages. TREM2 is also present on cultured bone marrow-derived macrophages and monocyte-derived dendritic cells. Some research have identified a rare variant of TREM2 that is a risk factor for Alzheimer disease (AD), which is the most common form of late-onset dementia. The extracellular region of TREM2 contains a single immunoglobulin superfamily domain and binds polyanionic ligands, such as bacterial lipopolysaccharide (LPS) and phospholipids⁸. Upon ligand binding, TREM2 transmits intracellular signals through an adaptor, DAP12 (also known as TYRO protein tyrosine kinase-binding protein (TYROBP)), which is associated with the transmembrane region of TREM2 and which recruits the protein tyrosine kinase SYK through its cytosolic immunoreceptor tyrosine-based activation motifs (ITAMs). TREM2 is a pro-tumorigenic marker of tumor-infiltrating macrophages in mouse models and human tumors that can be targeted to curb tumor growth and improve the efficacy of checkpoint blockade therapy while remodeling the landscape of tumor-infiltrating macrophages.

Molecular Weight:	43.9 kDa
-------------------	----------

NCBI Accession:	NP_061838
-----------------	---------------------------

Application Details

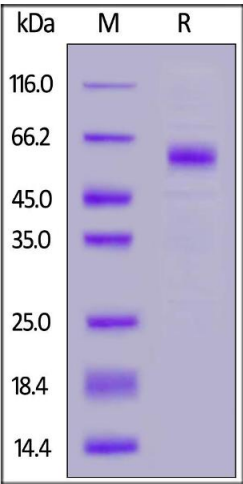
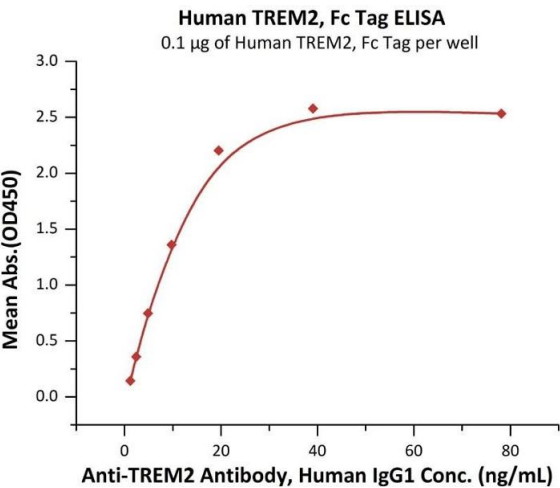
Restrictions:	For Research Use only
---------------	-----------------------

Handling

Format:	Lyophilized
---------	-------------

Buffer:	50 mM Tris, 100 mM Glycine, 25 mM Arginine, 150 mM NaCl, pH 7.5
---------	-----------------------------------------------------------------

Storage:	-20 °C
----------	--------



ELISA

Image 1. Immobilized Human TREM2, Fc Tag (ABIN6973289) at 1 µg/mL (100 µL/well) can bind A Antibody, Human IgG1 with a linear range of 1-20 ng/mL (QC tested).

SDS-PAGE

Image 2. Human TREM2, Fc Tag on under reducing (R) condition. The gel was stained overnight with Coomassie Blue. The purity of the protein is greater than 95 % .