



[Go to Product page](#)

Datasheet for ABIN7013703  
**IL1RL2 Protein (AA 20-335) (His tag)**

2 Images

Overview

Quantity:	100 µg
Target:	IL1RL2
Protein Characteristics:	AA 20-335
Origin:	Human
Source:	HEK-293 Cells
Protein Type:	Recombinant
Biological Activity:	Active
Purification tag / Conjugate:	This IL1RL2 protein is labelled with His tag.

Product Details

Characteristics:	Human IL-1 Rrp2 / IL-1 R6 (C154S, C262S) Protein, His Tag (MALS verified)
Purity:	>95 % as determined by SDS-PAGE.
Endotoxin Level:	Less than 1.0 EU per µg by the LAL method.

Target Details

Target:	IL1RL2
Alternative Name:	IL-1 Rrp2 ( <a href="#">IL1RL2 Products</a> )
Background:	The Interleukin 1 receptor family (IL-1 R) comprises at least eleven members including IL-1 RI (IL-1 R1), IL-1 RII (IL-1 R2), IL-1 RAcP (IL-1 R3), ST2 (T1/IL-1 R4), IL-18 Ra (IL-1 Rrp/IL-1 R5), IL-1 Rrp2 (IL-1 RL2/IL-1 R6), IL-18 Rb (AcPL/IL-1 R7), IL-1RAPL-1 (TIGIRR-2/IL-1 R8), and TIGIRR-1 (IL-1 R9). All family members possess three immunoglobulin (Ig)-like domains in their

## Target Details

extracellular region. Most members also have an intracellular TIR (Toll-like receptor/IL-1 receptor signaling) domain that is also conserved in the Toll-like receptor family. Related proteins, SIGIRR (single Ig domain-containing IL-1 R-related molecule) and IL-18BP, differ from the other members by having only one Ig domain.

Molecular Weight: 37.9 kDa

NCBI Accession: [NP\\_003845](#)

## Application Details

Application Notes: MALS verified

Restrictions: For Research Use only

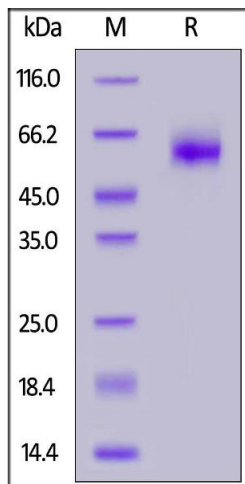
## Handling

Format: Lyophilized

Buffer: PBS, pH 7.4

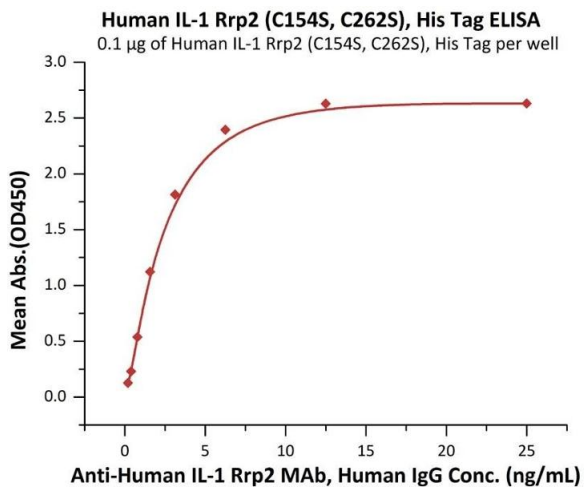
Storage: -20 °C

## Images



### SDS-PAGE

**Image 1.** Human IL-1 Rrp2 (C154S, C262S), His Tag on under reducing (R) condition. The gel was stained overnight with Coomassie Blue. The purity of the protein is greater than 95 % .



## ELISA

**Image 2.** Immobilized Human IL-1 Rrp2 (C154S, C262S), His Tag (ABIN6973102) at 1 µg/mL (100 µL/well) can bind A IL-1 Rrp2 MAb, Human IgG with a linear range of 0.2-3 ng/mL (Routinely tested).