

Datasheet for ABIN7013708
NCR1 Protein (AA 22-257) (His tag)



[Go to Product page](#)

1 Image

Overview

Quantity:	100 µg
Target:	NCR1
Protein Characteristics:	AA 22-257
Origin:	Cynomolgus
Source:	HEK-293 Cells
Protein Type:	Recombinant
Purification tag / Conjugate:	This NCR1 protein is labelled with His tag.

Product Details

Characteristics:	Cynomolgus NKp46 / NCR1 / CD335 Protein, His Tag (MALS verified)
Purity:	>90 % as determined by SDS-PAGE.
Endotoxin Level:	Less than 1.0 EU per µg by the LAL method.

Target Details

Target:	NCR1
Alternative Name:	NKp46 (NCR1 Products)
Background:	Natural cytotoxicity triggering receptor 1 (NCR1) is also known as Natural killer cell p46-related protein (NK-p46), Lymphocyte antigen 94 homolog (LY94), CD antigen CD335, which belongs to the natural cytotoxicity receptor (NCR) family. NCR1 contains two Ig-like (immunoglobulin-like) domains. NCR1 interacts with CD247 and FCER1G. NCR1 / CD335 may contribute to the increased efficiency of activated natural killer (NK) cells to mediate tumor cell lysis.

Target Details

Molecular Weight:	28.6 kDa
NCBI Accession:	NP_001271509
Pathways:	Regulation of Leukocyte Mediated Immunity

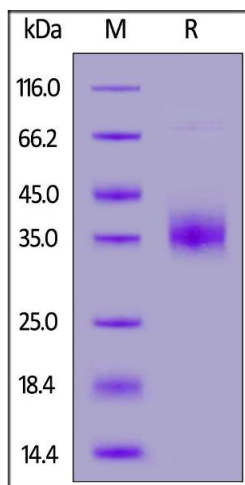
Application Details

Application Notes:	MALS verified
Restrictions:	For Research Use only

Handling

Format:	Lyophilized
Buffer:	PBS, pH 7.4
Storage:	-20 °C

Images



SDS-PAGE

Image 1. Cynomolgus NKp46, His Tag on under reducing (R) condition. The gel was stained overnight with Coomassie Blue. The purity of the protein is greater than 90 % .