

Datasheet for ABIN7013753

DLL3 Protein (AA 27-492) (His tag,FITC)[Go to Product page](#)**2** Images

Overview

Quantity:	200 µg
Target:	DLL3
Protein Characteristics:	AA 27-492
Origin:	Human
Source:	HEK-293 Cells
Protein Type:	Recombinant
Biological Activity:	Active
Purification tag / Conjugate:	This DLL3 protein is labelled with His tag,FITC.

Product Details

Purpose:	FITC-Labeled Human DLL3 Protein, His Tag
Purity:	>90 % as determined by SDS-PAGE.
Endotoxin Level:	Less than 1.0 EU per µg by the LAL method.

Target Details

Target:	DLL3
Alternative Name:	DLL3 (DLL3 Products)
Background:	Delta-like protein 3 (DLL3) is a transmembrane protein that belongs to the Delta/Serrate/Lag-2 (DSL) family of Notch ligands. May be required to divert neurons along a specific differentiation pathway. Plays a role in the formation of somite boundaries during segmentation of the paraxial mesoderm. DLL3 protein is expressed on the surface of tumor cells but not in normal

Target Details

	adult tissues.
Molecular Weight:	50.4 kDa
NCBI Accession:	NP_058637
Pathways:	Notch Signaling

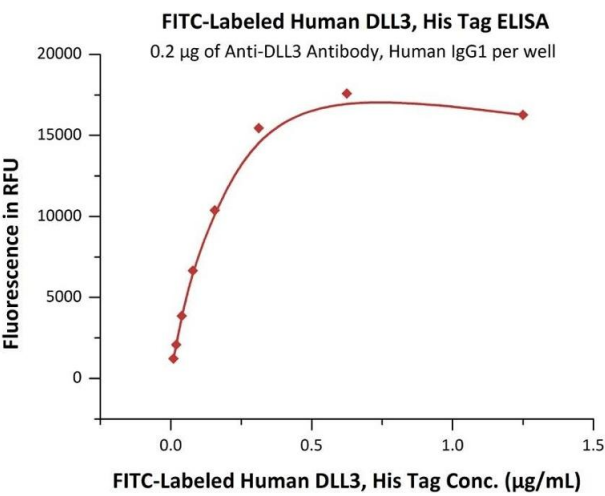
Application Details

Restrictions:	For Research Use only
---------------	-----------------------

Handling

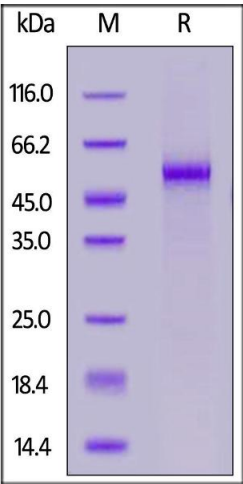
Format:	Lyophilized
Buffer:	PBS, Arginine, pH 7.4
Storage:	-20 °C

Images



ELISA

Image 1. Immobilized A Antibody, Human IgG1 at 2 µg/mL (100 µL/well) can bind Fed Human DLL3, His Tag (ABIN6992359) with a linear range of 0.01-0.313 µg/mL (QC tested).



SDS-PAGE

Image 2. Fed Human DLL3, His Tag on under reducing (R) condition. The gel was stained overnight with Coomassie Blue. The purity of the protein is greater than 90 % .