

Datasheet for ABIN7013871  
**anti-EHD1 antibody (N-Term)**

5 Images

[Go to Product page](#)

## Overview

Quantity:	100 µg
Target:	EHD1
Binding Specificity:	N-Term
Reactivity:	Human, Mouse
Host:	Goat
Clonality:	Polyclonal
Conjugate:	This EHD1 antibody is un-conjugated
Application:	Western Blotting (WB), ELISA, Immunohistochemistry (IHC), Immunofluorescence (IF), Flow Cytometry (FACS)

## Product Details

Purpose:	EHD1
Sequence:	FSWVSKDARR KKEPC
Cross-Reactivity:	Cow, Human, Mouse, Rat
Purification:	Purified from goat serum by ammonium sulphate precipitation followed by antigen affinity chromatography using the immunizing peptide.
Grade:	Verified

## Target Details

Target:	EHD1
---------	------

## Target Details

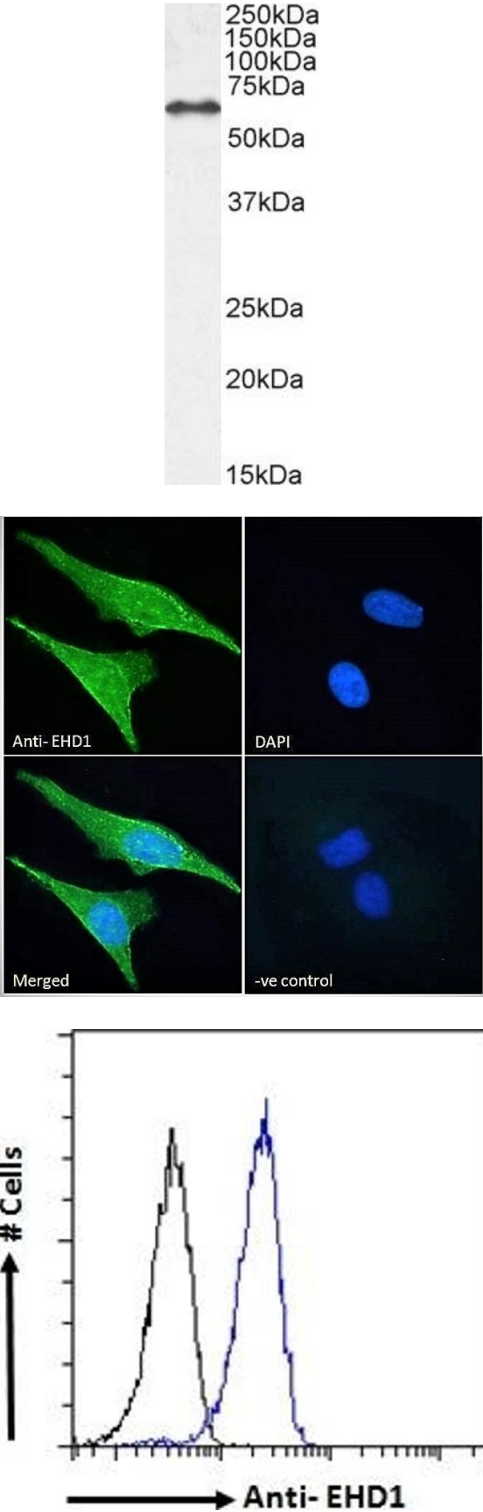
Alternative Name:	EHD1 ( <a href="#">EHD1 Products</a> )
Background:	EHD1, PAST, PAST1, H-PAST, HPAST1, EH-domain containing 1, testilin, FLJ42622, FLJ44618, OTTHUMP00000069747
Gene ID:	10938
Pathways:	<a href="#">Regulation of Muscle Cell Differentiation</a> , <a href="#">Skeletal Muscle Fiber Development</a>

## Application Details

Application Notes:	Immunohistochemistry: Paraffin embedded Human Thymus and Brain (Cortex). Recommended concentration: 3.75 µg/mL.  Western Blot: Approx 60 kDa band observed in lysates of cell line NIH3T3 (calculated MW of 60.6 kDa according to Mouse NP_0342491) Preliminary testing also showed a band at approx 60 kDa in Human Lymph node and Rat Kidney lysate and in HeLa cell lysate. Rec  Peptide ELISA: antibody detection limit dilution 1:32000.
Comment:	<b>Immunofluorescence:</b> Strong expression of the protein seen in the membranes and cytoplasm of HeLa and U2OS cells. Recommended concentration: 10µg/ml.  <b>Flow Cytometry:</b> Flow cytometric analysis of HeLa cells. Recommended c
Restrictions:	For Research Use only

## Handling

Buffer:	Supplied at 0.5 mg/mL in Tris saline, 0.02 % sodium azide, pH 7.3 with 0.5 % bovine serum albumin.
Preservative:	Sodium azide
Precaution of Use:	This product contains Sodium azide: a POISONOUS AND HAZARDOUS SUBSTANCE which should be handled by trained staff only.
Handling Advice:	Minimize freezing and thawing.
Storage:	-20 °C
Storage Comment:	Aliquot and store at -20°C, with minimal freeze/thawing. A working aliquot may be refrigerated at 4°C for a few weeks and still remain viable.



Western Blotting

**Image 1.** ABIN7013871 (0.1 µg/mL) staining of NIH3T3 cell lysate (35 µg protein in RIPA buffer). Detected by chemiluminescence.

Immunofluorescence

**Image 2.** ABIN7013871 Immunofluorescence analysis of paraformaldehyde fixed HeLa cells, permeabilized with 0.15 % Triton. Primary incubation 1hr (10 µg/mL) followed by Alexa Fluor 488 secondary antibody (2 µg/mL), showing membrane and cytoplasmic staining. The nuclear sta

Flow Cytometry

**Image 3.** ABIN7013871 Flow cytometric analysis of paraformaldehyde fixed HeLa cells (blue line), permeabilized with 0.5 % Triton. Primary incubation 1hr (10 µg/mL) followed by Alexa Fluor 488 secondary antibody (1 µg/mL). IgG control: Unimmunized goat IgG (black line) fol

Please check the [product details page](#) for more images. Overall 5 images are available for ABIN7013871.