

Datasheet for ABIN7013882

anti-TICAM1 antibody (Internal Region)[Go to Product page](#)**2** Images

Overview

Quantity:	100 µg
Target:	TICAM1
Binding Specificity:	Internal Region
Reactivity:	Human
Host:	Goat
Clonality:	Polyclonal
Conjugate:	This TICAM1 antibody is un-conjugated
Application:	Immunohistochemistry (IHC), ELISA, Flow Cytometry (FACS)

Product Details

Purpose:	TICAM1
Sequence:	HARADEHIAL RVREK
Cross-Reactivity:	Human
Purification:	Purified from goat serum by ammonium sulphate precipitation followed by antigen affinity chromatography using the immunizing peptide.
Grade:	Verified

Target Details

Target:	TICAM1
Alternative Name:	TICAM1 (TICAM1 Products)

Target Details

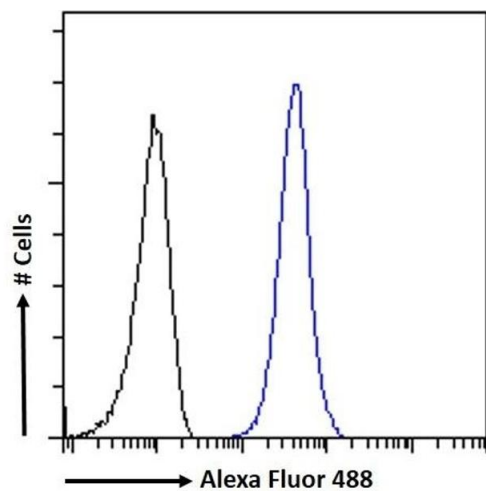
Background:	TICAM1, toll-like receptor adaptor molecule 1, MGC35334, PRVTIRB, TICAM-1, TRIF, TIR domain containing adaptor inducing interferon-beta
Gene ID:	148022
Pathways:	TLR Signaling , Activation of Innate immune Response , Cellular Response to Molecule of Bacterial Origin , Hepatitis C , Toll-Like Receptors Cascades

Application Details

Application Notes:	Immunohistochemistry: Paraffin embedded Human Small Intestine. Recommended concentration: 2.5 µg/mL. Peptide ELISA: antibody detection limit dilution 1:64000.
Comment:	Flow Cytometry: Flow cytometric analysis of K562 cells. Recommended concentration: 10ug/ml.
Restrictions:	For Research Use only

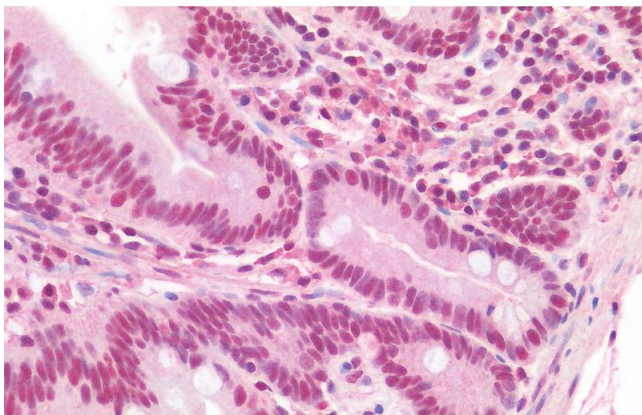
Handling

Buffer:	Supplied at 0.5 mg/mL in Tris saline, 0.02 % sodium azide, pH 7.3 with 0.5 % bovine serum albumin.
Preservative:	Sodium azide
Precaution of Use:	This product contains Sodium azide: a POISONOUS AND HAZARDOUS SUBSTANCE which should be handled by trained staff only.
Handling Advice:	Minimize freezing and thawing.
Storage:	-20 °C
Storage Comment:	Aliquot and store at -20°C, with minimal freeze/thawing. A working aliquot may be refrigerated at 4°C for a few weeks and still remain viable.



Flow Cytometry

Image 1. (ABIN7013882) Flow cytometric analysis of paraformaldehyde fixed K562 cells (blue line), permeabilized with 0.5 % Triton. Primary incubation 1hr (10 µg/mL) followed by Alexa Fluor 488 secondary antibody (1 µg/mL). IgG control: Unimmunized goat IgG (black line) fo



Immunohistochemistry

Image 2. ABIN7013882 (2.5 µg/mL) staining of paraffin embedded Human Small Intestine. Steamed antigen retrieval with citrate buffer Ph 6, AP-staining.