

Datasheet for ABIN7013885

anti-SLC5A1 antibody (Internal Region)[Go to Product page](#)

4 Images

Overview

Quantity:	100 µg
Target:	SLC5A1
Binding Specificity:	Internal Region
Reactivity:	Human
Host:	Goat
Clonality:	Polyclonal
Conjugate:	This SLC5A1 antibody is un-conjugated
Application:	Western Blotting (WB), ELISA, Immunohistochemistry (IHC), Immunocytochemistry (ICC)

Product Details

Purpose:	SGLT1
Sequence:	KETIEIETQV PEKKK
Cross-Reactivity:	Human
Purification:	Purified from goat serum by ammonium sulphate precipitation followed by antigen affinity chromatography using the immunizing peptide.
Grade:	Verified

Target Details

Target:	SLC5A1
Alternative Name:	SLC5A1 (SLC5A1 Products)

Target Details

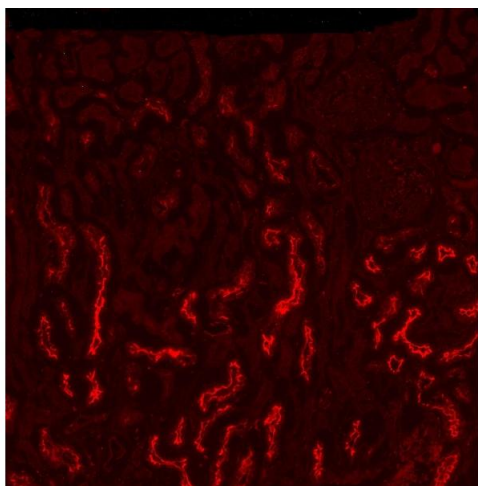
Background:	SLC5A1, solute carrier family 5 (sodium/glucose cotransporter), member 1, D22S675, NAGT, SGLT1, Human Na ⁺ /glucose cotransporter 1 mRNA, complete cds, sodium/glucose cotransporter 1, solute carrier family 5 (sodium/glucose transporter), member 1
Gene ID:	6523

Application Details

Application Notes:	<p>DS WB Results: Approx 75 kDa band observed in isolated Brush Border membranes from Human Kidney (calculated MW of 73.5 kDa according to NP_000334.1). Recommended concentration: 0.3-1 µg/mL. Primary incubation was 1 hour.</p> <p>DS IHC Results: In paraffin embedded Human Small Intestine shows staining of the glycocalix. Recommended concentration: 3-6 µg/mL.</p> <p>Peptide ELISA Statement: Peptide ELISA: antibody detection limit dilution 1:4000.</p>
Comment:	<p>Immunocytochemistry: Fig A.Frozen sections of Human Kidney show staining of the brush borders in DCT, while only weak background was observed in Rat and Pig Kidney. Recommended concentration: 2-4ug/ml. Fig B.PFA-fixed 4µm cryosections of Human Kidney shows staining of the brush border of proximal straight tubules (S3 segments) in the outer stripe zone. The signal drops to background levels upon blocking with the immunizing peptide.</p>
Restrictions:	For Research Use only

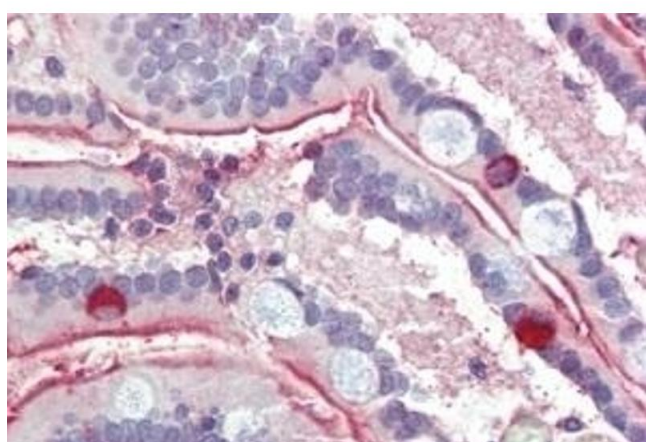
Handling

Buffer:	Supplied at 0.5 mg/mL in Tris saline, 0.02 % sodium azide, pH 7.3 with 0.5 % bovine serum albumin. Aliquot and store at -20 °C. Minimize freezing and thawing.
Preservative:	Sodium azide
Precaution of Use:	This product contains Sodium azide: a POISONOUS AND HAZARDOUS SUBSTANCE which should be handled by trained staff only.
Handling Advice:	Minimize freezing and thawing.
Storage:	-20 °C



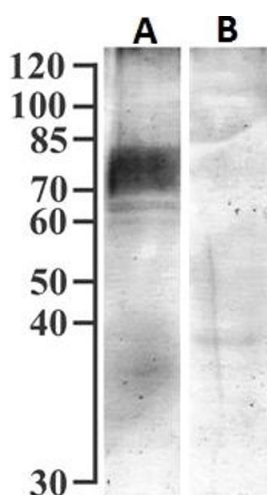
Immunofluorescence

Image 1. Fig A: ABIN7013885 (2.5 µg/mL) overnight staining of PFA-perfused cryosections of Human Kidney. Microwaved antigen retrieval with citrate buffer pH 6, CY3-staining. Data obtained from I. Vrhovac and I. Sabolic, Institute for Medical Research and Occupational Health



Immunohistochemistry

Image 2. ABIN7013885 (3.8 µg/mL) staining of paraffin embedded Human Small Intestine. Steamed antigen retrieval with citrate buffer pH 6, AP-staining.



Western Blotting

Image 3. ABIN7013885 (1 µg/mL) staining of isolated Brush Border Membranes from Human Kidney (75 µg protein) with (B) and without (A) blocking with the immunizing peptide. Detected by chemiluminescence. Data obtained from I. Vrhovac and I. Sabolic, Institute for Medical Research and Occupational Health

Please check the [product details page](#) for more images. Overall 4 images are available for ABIN7013885.