



[Go to Product page](#)

Datasheet for ABIN7013890

anti-TCR gamma/delta antibody (PE-DyLight 594)

3 Images

Overview

Quantity:	100 tests
Target:	TCR gamma/delta
Reactivity:	Human, Non-Human Primate
Host:	Mouse
Clonality:	Monoclonal
Conjugate:	This TCR gamma/delta antibody is conjugated to PE-DyLight 594
Application:	Flow Cytometry (FACS)

Product Details

Clone:	B1
Isotype:	IgG1 kappa
Specificity:	The mouse monoclonal antibody B1 (also known as B1.1) recognizes an extracellular epitope of TCR gamma/delta, the subtype of T cell receptor expressed mainly in epithelial tissues and at the sites of infection.
Purification:	Purified antibody is conjugated with activated tandem dye of R-phycoerythrin-DyLight®594 (PE-DyLight®594) under optimum conditions and unconjugated antibody and free fluorochrome are removed by size-exclusion chromatography.

Target Details

Target:	TCR gamma/delta
Alternative Name:	TCR gamma/delta (TCR gamma/delta Products)

Target Details

Background: The antigen-specific T cell receptor (TCR) is composed of either alpha and beta subunit, or gamma and delta subunit. Majority of T cells present in the blood, lymph and secondary lymphoid organs express TCR alpha/beta heterodimers, whereas the T cells expressing TCR gamma/delta heterodimers are localized mainly in epithelial tissues and at the sites of infection. The subunits of TCR heterodimers are covalently bonded and in the endoplasmic reticulum they associate with CD3 subunits to form functional TCR-CD3 complex. Lack of expression of any of the chains is sufficient to stop cell surface expression.,TCRG/D

Application Details

Application Notes: Flow cytometry: The reagent is designed for analysis of human blood cells using 4 µL reagent / 100 µL of whole blood or 10⁶ cells in a suspension. The content of a vial (0.4 ml) is sufficient for 100 tests.

Restrictions: For Research Use only

Handling

Buffer: Stabilizing phosphate buffered saline (PBS), pH 7.4, 15 mM sodium azide

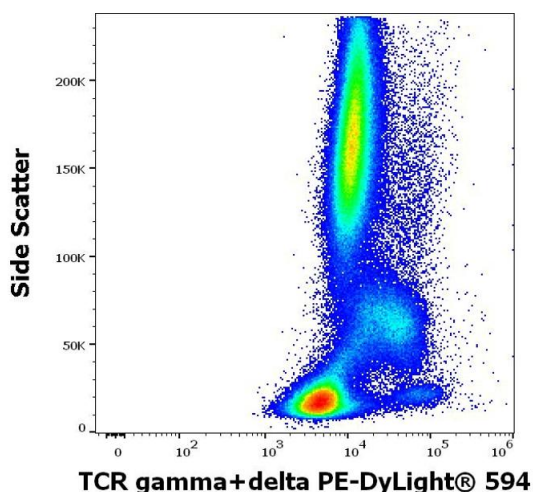
Preservative: Sodium azide

Precaution of Use: This product contains Sodium azide: a POISONOUS AND HAZARDOUS SUBSTANCE which should be handled by trained staff only.

Storage: 4 °C

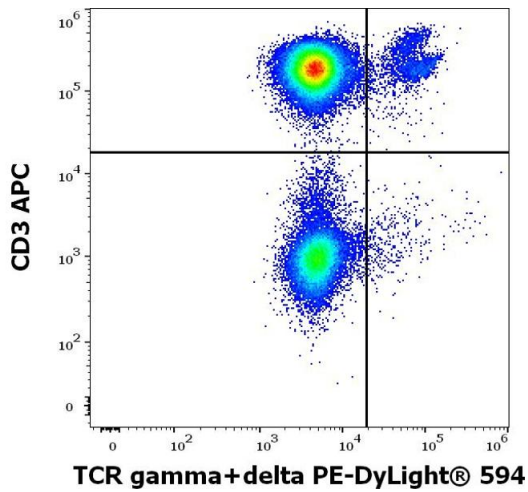
Storage Comment: Store at 2-8°C. Protect from prolonged exposure to light. Do not freeze.

Images



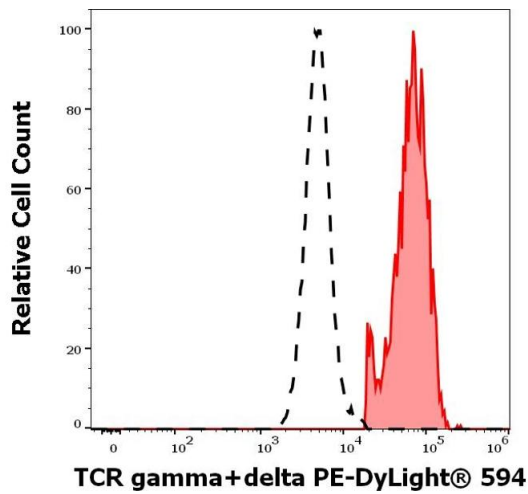
Flow Cytometry

Image 1. Flow cytometry surface staining pattern of human peripheral whole blood stained using anti-human TCR gamma/delta (B1) PE-DyLight® 594 antibody (4 µL reagent / 100 µL of peripheral whole blood).



Flow Cytometry

Image 2. Flow cytometry multicolor surface staining of human lymphocytes stained using anti-human TCR gamma/delta (B1) PE-DyLight® 594 antibody (4 µL reagent / 100 µL of peripheral whole blood) and anti-human CD3 (UCHT1) APC antibody (10 µL reagent / 100 µL of peripheral whole blood).



Flow Cytometry

Image 3. Separation of human TCR gamma/delta positive T cells (red-filled) from TCR gamma/delta negative CD3 negative lymphocytes (black-dashed) in flow cytometry analysis (surface staining) of human peripheral whole blood stained using anti-human TCR gamma/delta (B1) PE-DyLight® 594 antibody (4 µL reagent / 100 µL of peripheral whole blood).