

Datasheet for ABIN7013895
anti-TCR alpha/beta antibody



[Go to Product page](#)

2 Images

Overview

Quantity:	100 µg
Target:	TCR alpha/beta
Reactivity:	Rat, Non-Human Primate
Host:	Mouse
Clonality:	Monoclonal
Conjugate:	This TCR alpha/beta antibody is un-conjugated
Application:	Flow Cytometry (FACS), Immunoprecipitation (IP), Immunohistochemistry (Frozen Sections) (IHC (fro)), Western Blotting (WB), Immunohistochemistry (Paraffin-embedded Sections) (IHC (p)), Functional Studies (Func), Immunocytochemistry (ICC)

Product Details

Purpose:	Anti-Rt TCR alpha/beta Purified Low Endotoxin
Immunogen:	Rat T blasts and erythrocytes
Clone:	R73
Isotype:	IgG1 kappa
Specificity:	The mouse monoclonal R73 recognizes an extracellular epitope TCR alpha/beta, the dominant subtype of T cell receptor expressed in peripheral blood.
Purification:	Purified by protein-A affinity chromatography.
Endotoxin Level:	Endotoxin level is less than 0.01 EU/µg of the protein, as determined by the LAL test.

Target Details

Target:	TCR alpha/beta
Alternative Name:	TCR alpha/beta (TCR alpha/beta Products)
Background:	The antigen-specific T cell receptor (TCR) is composed of either alpha and beta subunit, or gamma and delta subunit. Majority of T cells present in the blood, lymph and secondary lymphoid organs express TCR alpha/beta heterodimers, whereas the T cells expressing TCR gamma/delta heterodimers are localized mainly in epithelial tissues and at the sites of infection. The subunits of TCR heterodimers are covalently bonded and in the endoplasmic reticulum they associate with CD3 subunits to form functional TCR-CD3 complex. Lack of expression of any of the chains is sufficient to stop cell surface expression.,TCRA/B

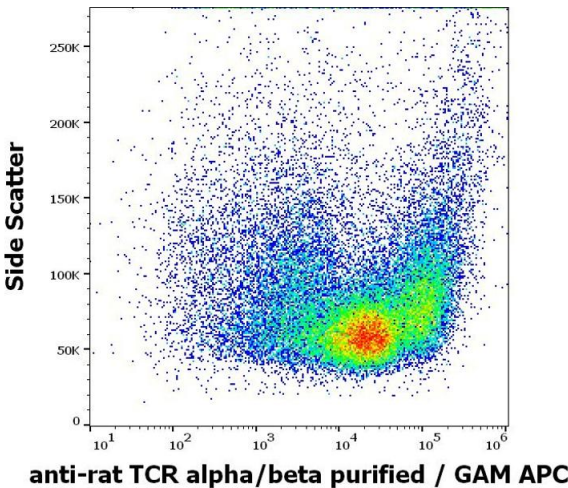
Application Details

Application Notes:	Flow cytometry: Recommended dilution: 1-4 µg/mL. Functional application: In vitro activation and in vivo depletion of alpha/beta TCR T cells.
Restrictions:	For Research Use only

Handling

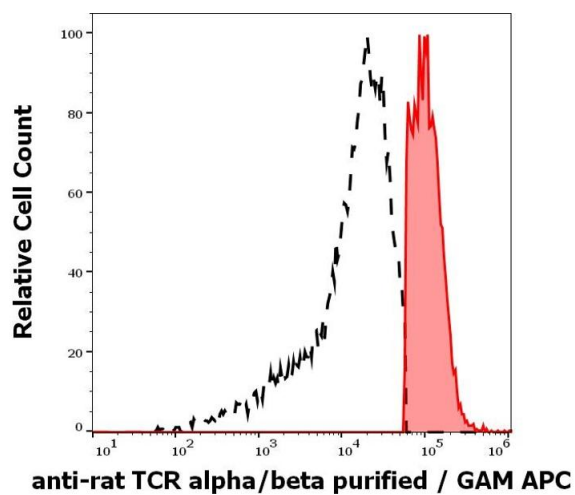
Concentration:	1 mg/mL
Buffer:	Phosphate buffered saline (PBS), pH 7.4
Storage:	4 °C
Storage Comment:	Store at 2-8°C. Do not freeze.

Images



Flow Cytometry

Image 1. Flow cytometry surface staining pattern of rat thymocyte suspension stained using anti-rat TCR alpha/beta (R73) purified antibody (concentration in sample 1.6 µg/mL) GAM APC.



Flow Cytometry

Image 2. Separation of rat TCR alpha/beta positive thymocytes (red-filled) from TCR alpha/beta negative thymocytes (black-dashed) in flow cytometry analysis (surface staining) of rat thymocyte suspension stained using anti-rat TCR alpha/beta (R73) purified antibody (concentration in sample 1.6 $\mu\text{g/mL}$) GAM APC.