



[Go to Product page](#)

Datasheet for ABIN7013906  
**anti-MICA/B antibody (Biotin)**

1 Image

### Overview

Quantity:	0.1 mg
Target:	MICA/B (MICA/MICB)
Reactivity:	Human
Host:	Mouse
Clonality:	Monoclonal
Conjugate:	This MICA/B antibody is conjugated to Biotin
Application:	Flow Cytometry (FACS), Immunoprecipitation (IP), Immunocytochemistry (ICC)

### Product Details

Immunogen:	Transfected C1R cells expressing MICA
Clone:	6D4
Isotype:	IgG2a
Specificity:	The mouse monoclonal antibody 6D4 recognizes a common extracellular epitope on MICA and MICB glycoproteins, transmembrane ligands of CD314 (NKG2D), and is able to block CD314-mediated activation of NK cells and cytotoxic T cells.
Purification:	Purified antibody is conjugated with biotin LC-NHS ester under optimum conditions and unconjugated antibody and free biotin are removed by size-exclusion chromatography.

### Target Details

Target:	MICA/B (MICA/MICB)
Alternative Name:	MICA/MICB ( <a href="#">MICA/MICB Products</a> )

## Target Details

---

**Background:** MICA and MICB glycoproteins are members of MHC class I family, closely linked to HLA-B. However, unlike HLA molecules, MICA and MICB are not associated with beta2 microglobulin and are conformationally stable in the absence of conventional MHC class I peptide ligands. Both proteins are stress-induced antigens expressed mainly in gastrointestinal epithelium, where they are recognized by V-delta1 subset of gamma/delta T cells, and also on diverse epithelial tumor cells. Binding of MICA/MICB receptor, the NKG2D, leads to cytolytic response of NK cells, Tc cells, and gamma/delta T cells. Alternative splicing results in multiple isoforms, and some of them have been associated with susceptibility to psoriasis and psoriatic arthritis. Shedding of MICA-related antibodies and ligands is involved in the progression from monoclonal gammopathy of undetermined significance to multiple myeloma.

## Application Details

---

**Application Notes:** Flow cytometry: Recommended dilution: 1-12 µg/mL.

**Restrictions:** For Research Use only

## Handling

---

**Concentration:** 1 mg/mL

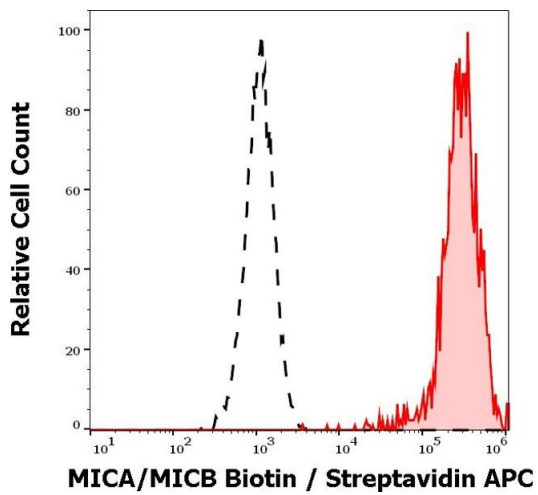
**Buffer:** Phosphate buffered saline (PBS), pH 7.4, 15 mM sodium azide

**Preservative:** Sodium azide

**Precaution of Use:** This product contains Sodium azide: a POISONOUS AND HAZARDOUS SUBSTANCE which should be handled by trained staff only.

**Storage:** 4 °C

**Storage Comment:** Store at 2-8°C. Do not freeze.



### Flow Cytometry

**Image 1.** Separation of Jurkat cells stained using anti-human MICA/MICB (6D4) Biotin antibody (concentration in sample 4 µg/mL, Streptavidin APC, red-filled) from unstained Jurkat cells (Streptavidin APC, black-dashed) in flow cytometry analysis (surface staining).