



[Go to Product page](#)

Datasheet for ABIN7013914
anti-PTPRF antibody (APC)

1 Image

Overview

Quantity:	0.1 mg
Target:	PTPRF
Reactivity:	Human, Non-Human Primate
Host:	Mouse
Clonality:	Monoclonal
Conjugate:	This PTPRF antibody is conjugated to APC
Application:	Flow Cytometry (FACS)

Product Details

Immunogen:	WERI-RB-1 retinoblastoma cells
Clone:	W7C6
Isotype:	IgG1
Specificity:	The mouse monoclonal antibody W7C6 recognizes an extracellular epitope of protein tyrosine phosphatase LAR, a marker of mesenchymal stem cells.
Purification:	Purified antibody is conjugated with activated allophycocyanin (APC) under optimum conditions and unconjugated antibody and free fluorochrome are removed by size-exclusion chromatography.

Target Details

Target:	PTPRF
Alternative Name:	LAR (PTPRF Products)

Target Details

Background: Protein tyrosine phosphatase receptor type F,LAR is a receptore-linked transmembrane protein tyrosine phosphatase expressed on mesenchymal stem cells, that reside e.g. in bone marrow, blood, placenta, adipose tissue, or skin, as well as it is expressed on some carcinoma cell lines, including HeLa, MCF-7, or HT29. During the process of externalization, LAR is intracellularly proteolytically processed into two non-covalently associated subunits. This protein is involved in intercellular and cell-matrix interactions and its extracellular part resembles that of cell adhesion molecules (CAMs). The extracellular part can be released from the surface, which may be used for regulation of LAR function.,Leucocyte common antigen related molecule, PTPRF, W7C6

Gene ID: 5792

UniProt: [G1UI20](#)

Pathways: [EGFR Signaling Pathway](#)

Application Details

Application Notes: Flow cytometry: Recommended dilution: 1-4 µg/mL.

Restrictions: For Research Use only

Handling

Concentration: 0.1 mg/mL

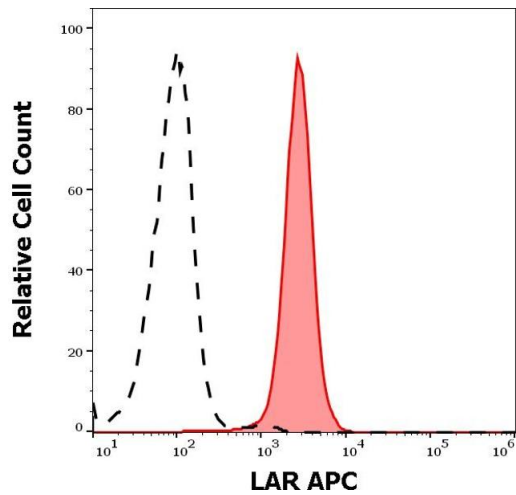
Buffer: Stabilizing phosphate buffered saline (PBS), pH 7.4, 15 mM sodium azide

Preservative: Sodium azide

Precaution of Use: This product contains Sodium azide: a POISONOUS AND HAZARDOUS SUBSTANCE which should be handled by trained staff only.

Storage: 4 °C

Storage Comment: Store at 2-8°C. Protect from prolonged exposure to light. Do not freeze.



Flow Cytometry

Image 1. Separation of HeLa cells stained using anti-human LAR (W7C6) APC antibody (concentration in sample 1,7 µg/mL, red-filled) from HeLa cells stained using mouse IgG1 isotype control (MOPC-21) APC antibody (concentration in sample 1,7 µg/mL, same as LAR APC concentration, black-dashed) in flow cytometry analysis (surface staining) of HeLa cell suspension.